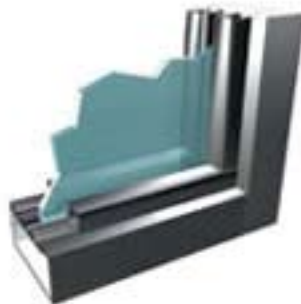


P2000 Frame

A heavy-duty frame that can accommodate rigid screens up to 10-1/2' high by 20' wide



P2000 Frame

P-SERIES RIGID FRAMES

- Choose from a variety of award winning screen materials
- Rigid screens are offered in acrylic or glass depending on application & size requirements
- Stewart rigid frames are designed to fit the unique requirements of any type of installation
- Most systems are packaged as one complete unit (depending on size & installation)
- Large-Sized frames are shipped with pre-drilled components and hardware ready for assembly on-site

FEATURES

- A heavy-duty frame that can accommodate rigid screens up to 10-1/2' high by 20' wide
- Requires a wall opening 4" larger (in height & width) over the image size
- Extruded aluminum
- Available in clear (silver in color) or dark bronze (black in color) finishes
- Designed to be inset into a wall or cabinet
- Freestanding or hanging (flying) systems also available



RESIDENTIAL

Find your local representative at www.stewartfilmscreen.com/rebs