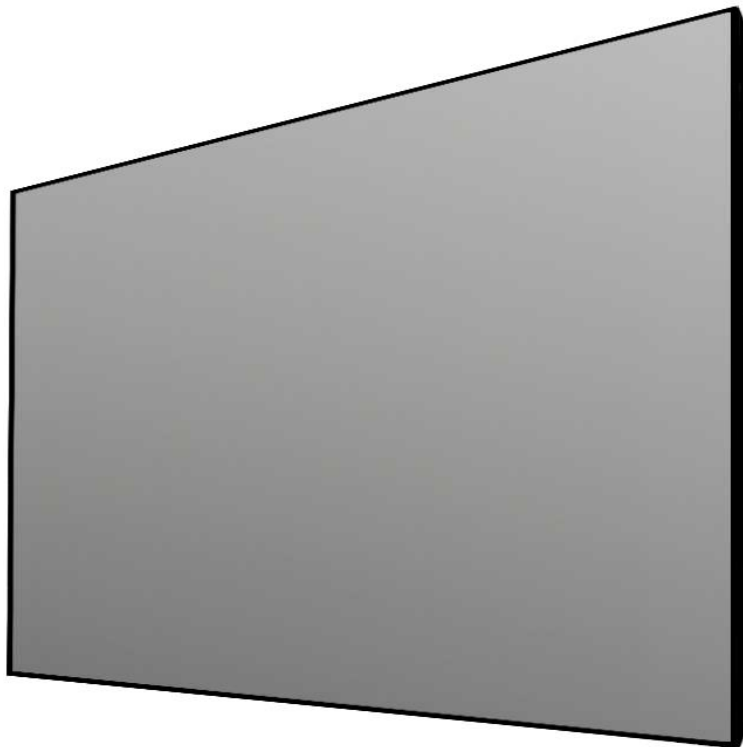


Balón Series

Borderless, or Minimally Bordered Flexible Screen System



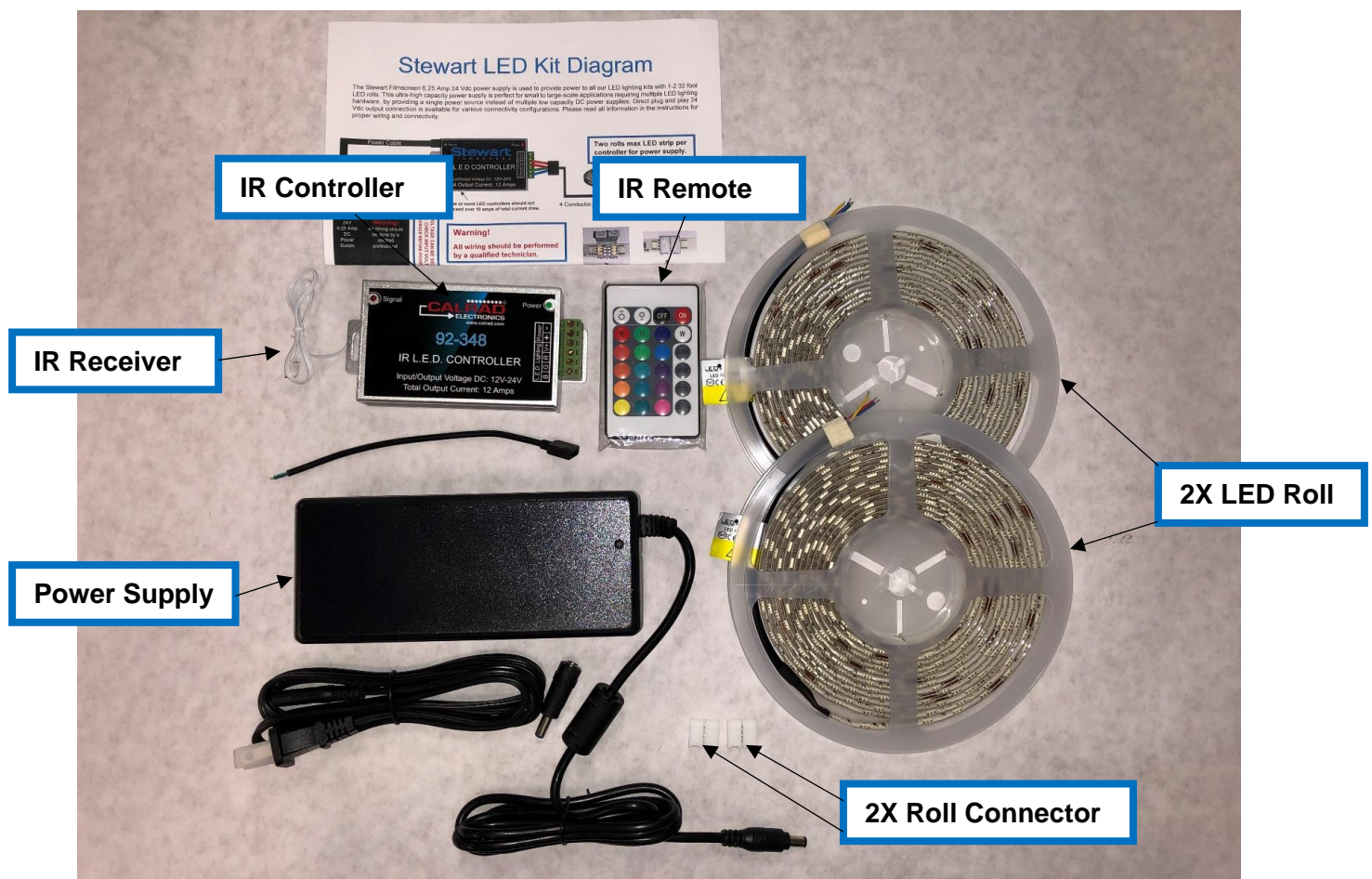
Stewart
F I L M S C R E E N

The Reference for Stunning™

BALON SERIES LED KIT CONTENTS

The following is what is included in your new LED kit from Stewart.

- 2X LED Rolls (series roll connector included)
- 1X IR Controller (remote included)
- 1X 24 V 6.25 A Power Supply



BALON SERIES LED KIT INSTALLATION GUIDE

Use the following steps to connect the LED kit to the Balón Series.

Note: This step should always precede screen material attachment.

1. Start at either bottom corner of the back of the Balón frame, depending on which side you would like your power supply to run on (see Figure 1).

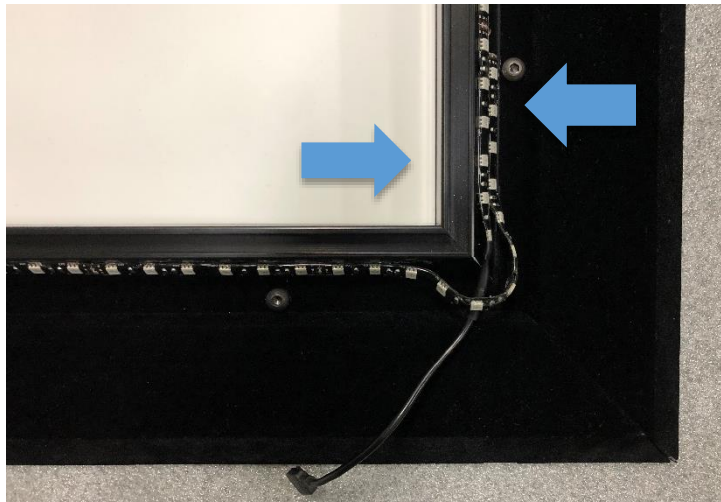


Figure 1: Start and end of LED strip attachment

2. Begin at the LED rail and start laying down the adhesive side of the LED strip, about 1/4" away from the edge (see Figure 2).

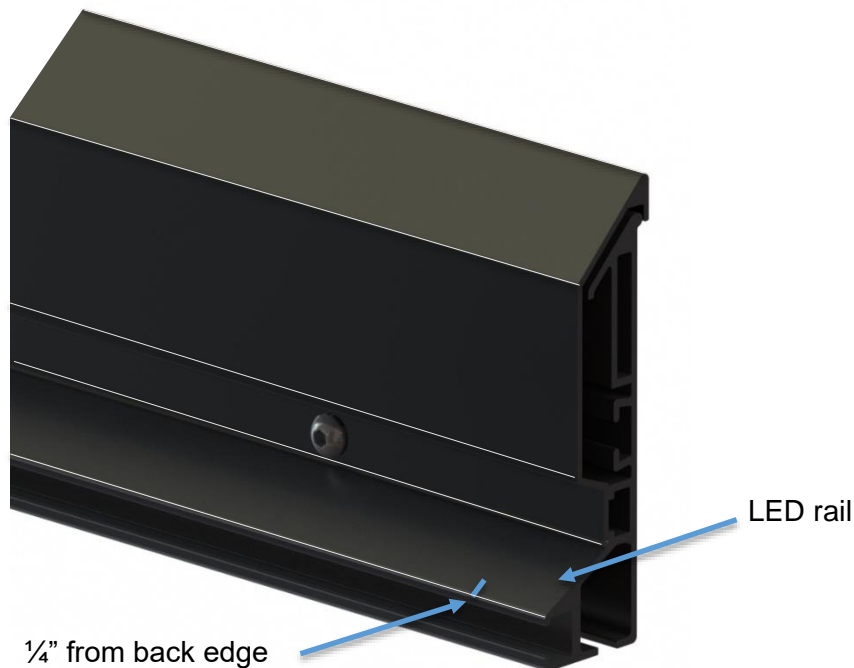


Figure 2: Cross section of Balón frame indicating LED rail

BALON SERIES LED KIT INSTALLATION GUIDE (CONT.)

3. Once you reach the corner/turn on the frame, make a wide loop with the LED strip so that at least 4-5 LED diodes are hanging in the corner to even out the light field coverage (see Figure 3).

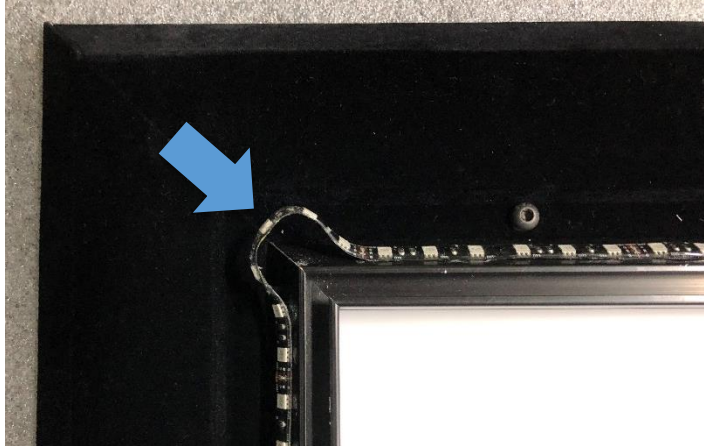
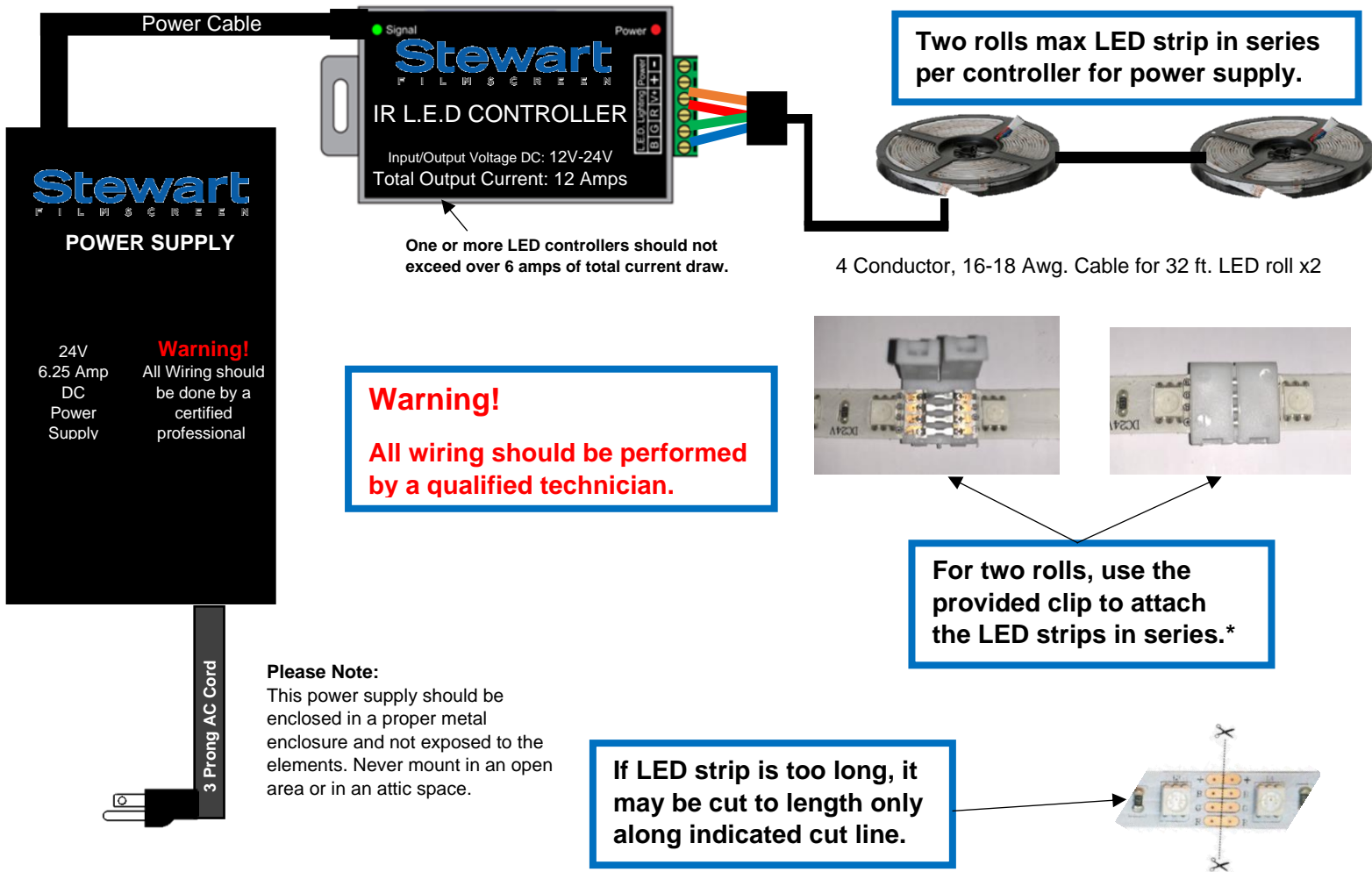


Figure 3: Corner loop for LED coverage

4. Repeat on all four sides, as well as the corners, until you reach the initial starting point.
5. Test out the LED kit with the provided power source before screen material attachment to ensure the LEDs are working as intended.

Stewart LED Kit Diagram

The Stewart Filmscreen 6.25 Amp 24 Vdc power supply is used to provide power to all our LED lighting kits with 1-2 16 foot LED rolls. This ultra-high capacity power supply is perfect for small to large-scale applications requiring multiple LED lighting hardware, by providing a single power source instead of multiple low capacity DC power supplies. Direct plug and play 24 Vdc output connection is available for various connectivity configurations. Please read all information in the instructions for proper wiring and connectivity.



Stewart
F I L M S C R E E N

The Reference for Stunning™

*connectors are shipped attached to a paper corner, remove and unclip from paper before install.