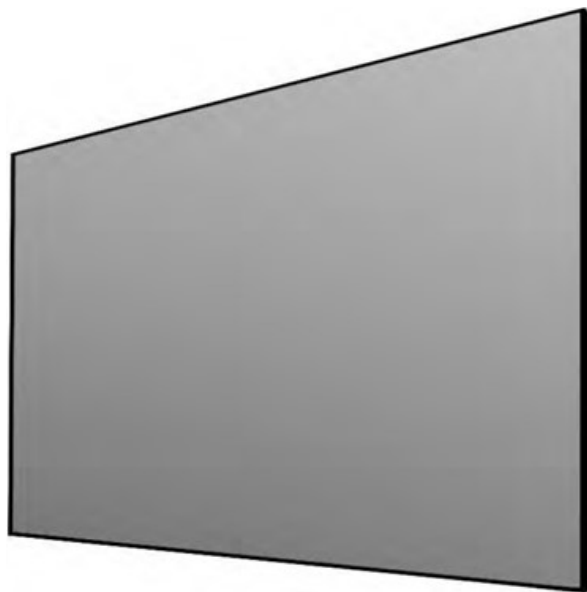
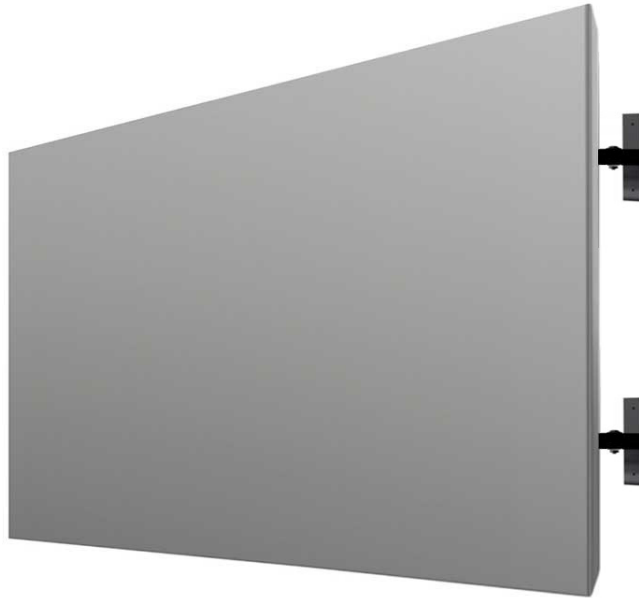


Balón Series

Borderless, or Minimally Bordered Flexible Screen System



Stewart
F I L M S C R E E N

The Reference for Stunning™

Balón Series

OWNERS MANUAL

Contents

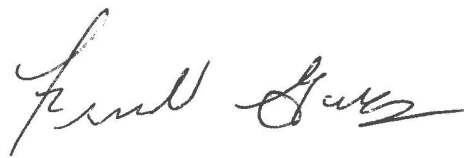
To the Owner	4
About the Balón Series.	5
Installation Preperation	6
Frame Assembly	7
Flush Mount Bracket System	9
Telescoping Mount Bracket System	11
Attaching the Screen to the Frame (Vinyl & Woven Material)	15
Attaching the Screen to the Frame (BlackHawk UST Material).	16
Attaching the Border Trim (Balón Edge only)	18
Installation Troubleshooting	25
Caring for and Cleaning the Screen	26
One (1) Year Limited Warranty	26

TO THE OWNER

Congratulations on purchasing the finest optical viewing screen in the world.

Your hand-crafted, Balón Series projection screen has been carefully inspected to ensure you will have an optimal viewing experience that will last many years. Please take a moment to review this manual. It will guide you through the installation and the operation of your screen, and will also provide you with detailed instructions on how to care for your screen's viewing surface.

From all of us at Stewart Filmscreen, we would like to thank you for choosing the Balón Series. Should you have any questions, please don't hesitate to contact our customer service department at 1 (310) 784-5300, or toll free at 1 (800) 762-4999. We're here to help.

A handwritten signature in black ink, reading "Frank Gomez". The signature is fluid and cursive, with the first name "Frank" being more prominent and the last name "Gomez" following in a similar style.

Frank Gomez
Fixed Frame Masking Specialist

ABOUT THE BALÓN SERIES

This is the most progressive wraparound frame available on the market. With great scalability and offered with Stewart's most in-demand screen materials, the new Balón Series checks all the boxes - all with keeping the image plane within one and one-half inches off the wall's surface. Choose Balón Edge with a minimal, half-inch black over scan border, giving on screen content perceived contrast and a crisp edge. Or choose Balón Borderless where there is no black border, allowing the image on the screen to appear to float in the room.

USING THIS MANUAL FOR INSTALLATION

Before proceeding with the installation, please take a few moments to thoroughly read and understand these instructions.

This owner's manual covers the Balón Series family of products. Each headline to the sections will make it clear which Balón specification the respective steps refer to.

INSTALLATION PREPARATION

Before proceeding with the installation of the screen, take time to thoroughly read and understand these installation instructions. Failure to comply with the instructions contained in this manual may result in voiding the warranty.

1. Make sure there is a clean surface on which to unroll the screen and assembly of the frame.
2. Check the size and weight of the screen to be installed so that you can plan for the number of people required for the installation. Specifications regarding the individual screen dimension, weight, etc... provided by the factory when the screen is ordered.
3. You will need at least two people to mount the screen, depending on the size and weight of the unit. More are needed for larger, heavier screens.

What's inside the Box?

- ▶ Inside the box you will find everything needed to get started on enjoying your Balón screen.
- ▶ Screen material placed in a tube with packing material for protection
- ▶ Disassembled frame and all necessary hardware to re-assemble frame
- ▶ Hanging bar and mounting hardware
- ▶ LED lighting kit, if ordered
- ▶ White cloth gloves (for UST Material only)
- ▶ Quick Start Guide

You will need:

- ▶ A level
- ▶ A drill
- ▶ A drop cloth
- ▶ Tools for tightening the fasteneres
- ▶ Lint-free, clead cloth gloves for handling the screen
- ▶ Ladders for the personnel supporting the screen during the mounting process
- ▶ Fasteners appropriate for the surface on which the screen is being mounted

⚠ NOTE

Bolts and other fasteners for the screen are standard gauge and size for use in the USA. For this reason, the sizes are expressed in inches rather than metric measurements.

FRAME ASSEMBLY

Unpacking

Use a drop cloth to protect all surrounding surfaces and be sure to unpack carefully in a clean area. Use special care when handling the screen material so that it does not become soiled or damaged. If you plan to repack your screen and hardware for transportation to another location, you may wish to photograph or make a note regarding how it was packed. Keep the original packing material for future use, if desired.

⚠ CAUTION

Do not stand on the screen tube or store it on its end. This will cause screen damage. If you are not installing the screen immediately, make sure it remains horizontal during storage.

Frame Assembly Instructions

1. Connect the frame members by matching numbered dots on the ends of the members (see Figure 1).
2. Secure the frame members with the supplied 1/4" - 20 x 3/8" bottom socket head bolts

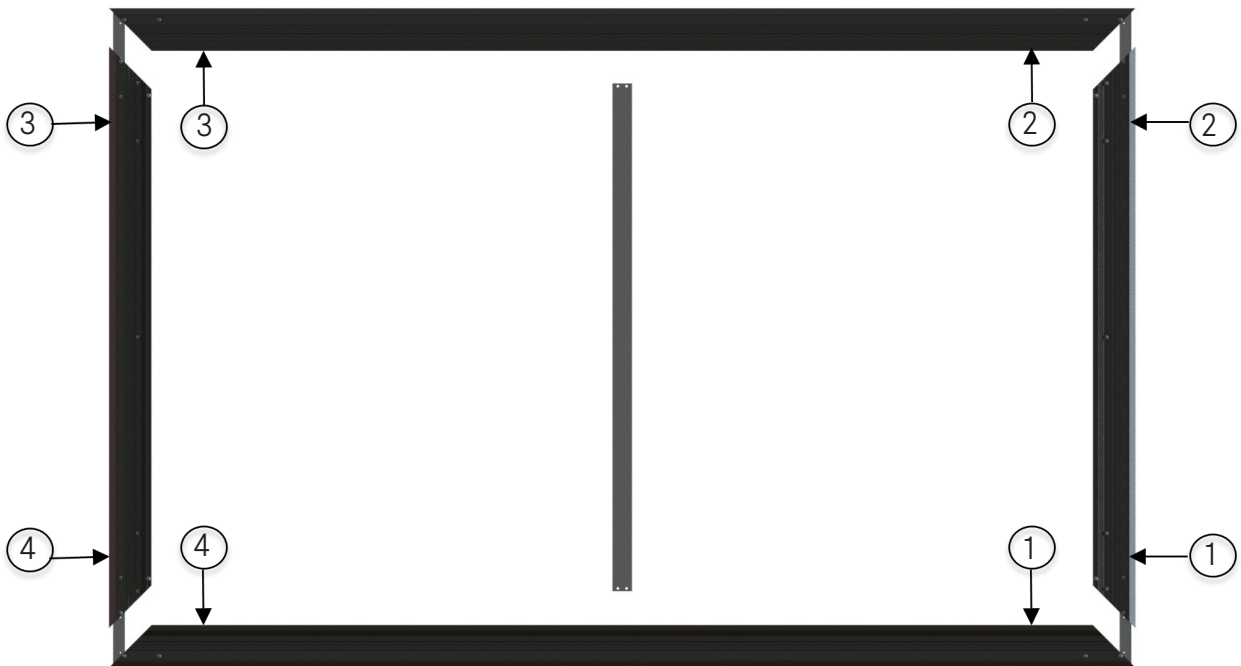


Figure 1: Frame assembly rear view

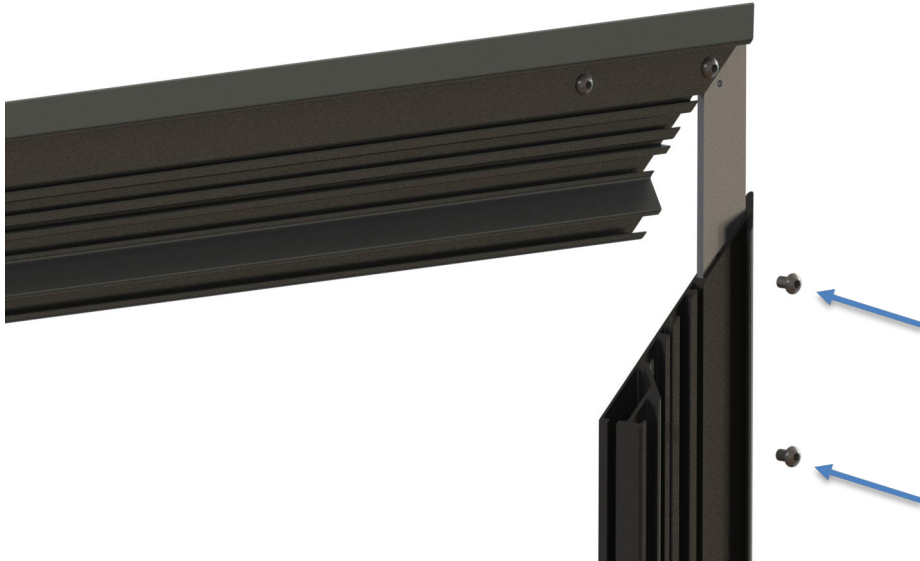


Figure 2: Fastener locations

3. Some of the larger Balón screen frames will require a back brace (included) to keep the integrity of the frame intact. The back brace will also attach to the frame with the above type bolts. Make sure to install any provided back braces. Once all corners of the frame and any braces are secure, you are now ready to temporarily hang the frame to the wall.

⚠ Caution

Install all back braces before the installation of the screen material.

FLUSH MOUNT BRACKET SYSTEM

Note: Professional mounting techniques should be used. Stewart Filmscreen cannot be liable for sub-standard or faulty installations. Failure to comply with the instructions and guidance contained in this manual may result in voiding your warranty.

To accurately position the Balón Series frame, you will need to mount the Flush Mount hanging bar and temporarily hang the frame prior to attaching the screen material.

Note: The screen material should not be attached to the frame at this point.

1. Identify the location of wall studs where you can securely mount the Flush Mount hanging bar.
2. Use a level to accurately position the Flush Mount hanging bar on the wall.
3. Fasten and secure the magnet mount into the rail of the frame (see figure 3.) The puck is mounted on the wall.
4. Drill holes through the bar into the studs.
5. Use the provided 2" screws or other appropriate fasteners to secure the Flush Mount hanging bar to the wall studs (see Figure 4).

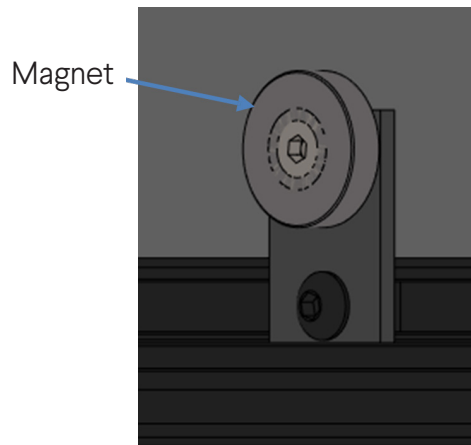


Figure 3: Magnet Mount Assembly

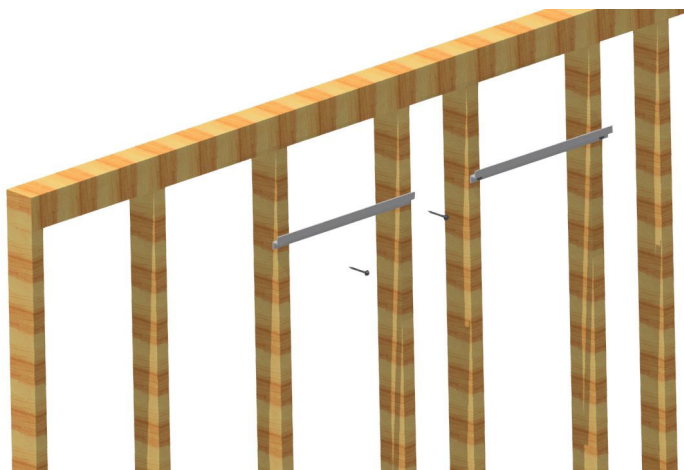


Figure 4: Flush Mount hanging bar

Note: A minimum of three (3) screws are recommended to safely secure the frame.

FLUSH MOUNT BRACKET SYSTEM (CONTINUED)

5. Check to make sure the bar is level.
6. Without the screen attached, hang the assembled frame onto the Flush Mount hanging bar to ensure that it is correctly mounted (see Figure 4).



Figure 4: Cross section of frame mounted on Flush Mount hanging bar

7. Remove the frame and follow the steps for attaching the screen to the frame.
(For vinyl & woven snap material, refer to page 11. For BlackHawk UST lace and grommet material, refer to page 16).

TELESCOPING (STAND OFF) MOUNT BRACKET SYSTEM

Note: Professional mounting techniques should be used. Stewart Filmscreen cannot be liable for sub-standard or faulty installations. Failure to comply with the instructions and guidance contained in this manual may result in voiding your warranty.

To accurately position the Balón Series frame, you will need to mount the Telescoping Mount and temporarily hang the frame prior to attaching the screen material.

Note: The screen material should not be attached to the frame at this point.

1. Attach the provided telescoping mounts by unscrewing and reinstalling the attached cap screws in the mounting rail on the frame with the telescoping mount (see Figure 5).



Figure 5: Telescoping Mount to frame attachment

2. Identify the location of wall studs where you can securely mount the Telescoping Mount wall bracket.
3. Use a level to accurately position the Telescoping Mounts on the wall.
4. Drill holes through the wall brackets into the studs.

TELESCOPING (STAND OFF) MOUNT BRACKET SYSTEM (CONT.)

5. Use the provided 2" screws or other appropriate fasteners to secure the Telescoping mounts to the wall studs (see Figure 6).

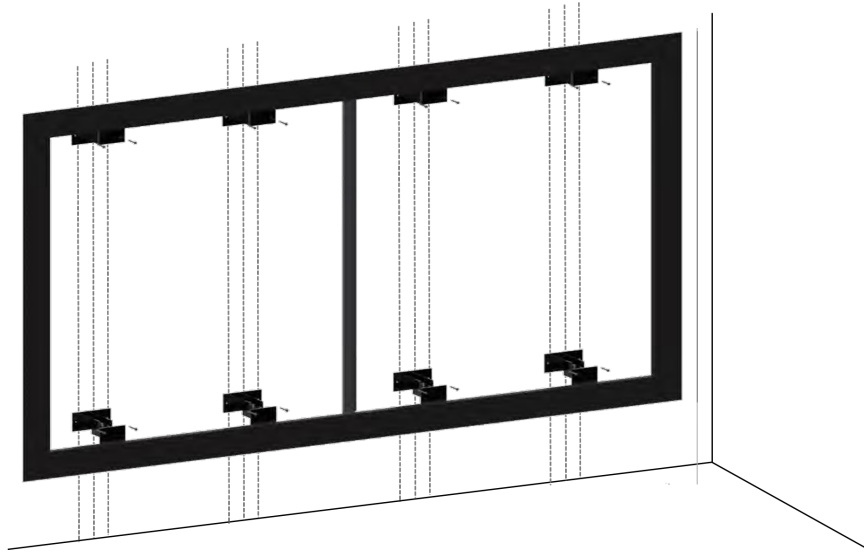


Figure 6: Mounting the frame with the Telescoping Mounts

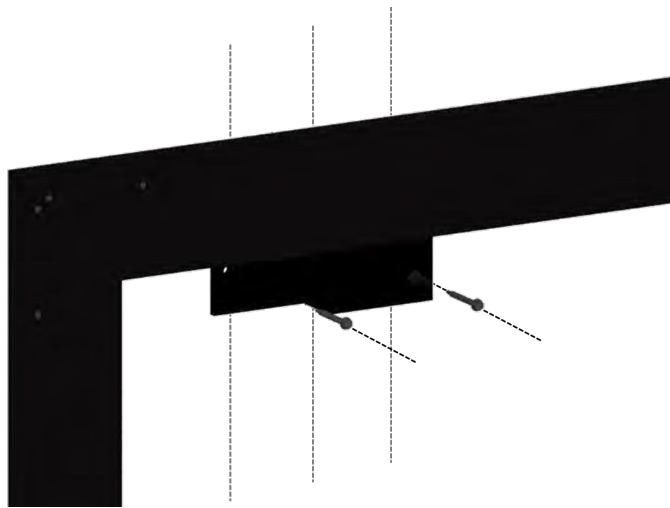


Figure 7: Mounting Detail

TELESCOPING (STAND OFF) MOUNT BRACKET SYSTEM (CONT.)

6. After the frame has been mounted, remove the frame by uninstalling the telescoping mount wall bracket that is attached to the frame bracket (see Figure 8).



Figure 8: rear view of frame uninstalled from Telescope Mount wall bracket

7. Remove the frame and follow the steps for attaching the screen to the frame. For vinyl & woven snap material, refer to page 14. For BlackHawk UST lace & grommet material refer to page 20

ATTACHING THE SCREEN TO THE FRAME (VINYL & WOVEN)

DO NOT perform this step until instructed to do so in the mounting section.

⚠ CAUTION

- ▶ Be careful not to touch or scratch the viewing surface
- ▶ Do not use any tools to fasten the screen to the frame
- ▶ Do not fold or crease the screen
- ▶ Wear lint-free gloves

UNPACKING AND UNROLLING THE SCREEN

The viewing side of the projection screen is rolled to the inside to protect the optical coating. The screen is rolled lengthwise.

1. Remove the screen from the cardboard shipping tube.
2. On a clean surface, unroll the screen viewing side up.
3. Leave the protective foam under the screen material to protect the screen. Flip the screen over so that the viewing surface is facing down.

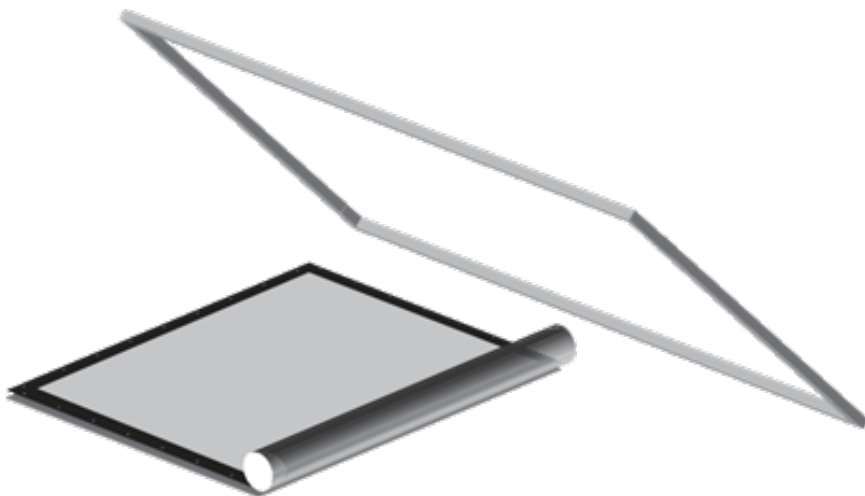


Figure 9: Unrolling the screen material (Vinyl or Woven)

ATTACHING THE SCREEN TO THE FRAME (CONTINUED)

Preparing the screen material. Vinyl will tend to contract if cold or store for long periods. Before attempting to mount the screen material to the frame first lay it out and allow the vinyl to acclimate itself to the room temperature (75+ Degrees).

1. Lay the frame on top of the screen mounting side up. If your screen was ordered with the black scrim, you will attach it to the frame first. (Do not attach it to the screen material and then try to attach both to the frame at the same time)
2. Starting with each corner, stretch the screen material over the corner then snap the screen onto the frame. Do not jerk, wrinkle, or crease the screen material (see Figure 6). Click [Here](#) for video.
3. Then, snap the rest of the screen starting with the snaps in the middle of the frame and move out towards the corners.



Figure 6: Screen corner tension tab

Note:

For vinyl and woven screen materials: If there are any wrinkles or puckers in the screen, the snaps on the frame can be adjusted side to side. Lay the frame viewing side down on a clean surface. A movement of 1/16" to 1/8" (1.6mm to 3.2mm) is usually sufficient to eliminate puckers.

ATTACHING THE SCREEN TO THE FRAME (BLACKHAWK UST)

⚠ CAUTION

- ▶ This screen Material is not like any other Stewart offers. Read all direction before attempting to install.
- ▶ A minimum of two people (**four are recommended**) are required to install the BlackHawk UST
- ▶ White gloves a needed to protect the screen surface. Not handling properly will cause permanent damage to the screen.
- ▶ Do not fold or crease the screen.

BlackHawk UST Installation Steps

1. Roll the screen out onto a drop cloth on the floor with the viewing side facing down (see Figure 7).
 - A. The BlackHawk UST comes pre-rolled with a foam liner on the viewing side.
For added protection, lay a plastic liner or clean sheet on the floor.
Simply roll the screen out on the clean surface, and the liner will shield the viewing surface from contact with the floor.
 - B. White gloves (provided) should ALWAYS be worn when handling the screen material to prevent damage to screen surface.

Note: The screen is labelled “Top” and “Bottom.” These MUST match the “Top” and “Bottom” labels on the frame for proper viewing.

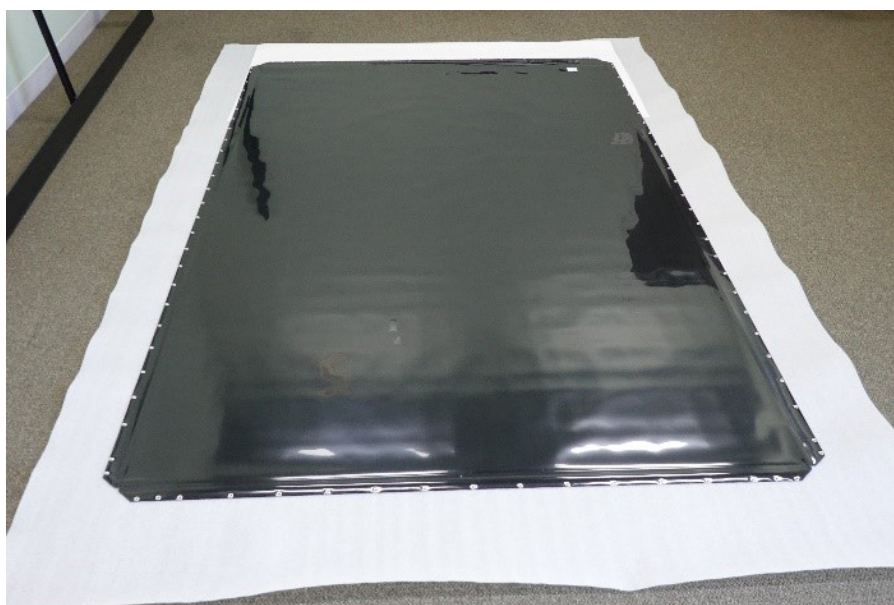


Figure 7: Roll screen out, viewing side down

ATTACHING THE SCREEN TO THE FRAME (BLACKHAWK UST) CONT

IMPORTANT: For best results in maintaining screen alignment on the frame, have at least two or more people work on opposite edges of the screen at the same time.

2. Carefully lay the frame on the screen, with the lacing cord facing up.
 - A. Once again, ensure the “Top” and “Bottom” labels on the screen align with the “Top” and “Bottom” labels on the frame.
 - B. Align all four corners of the screen with the corners of the frame (see Figure 8).

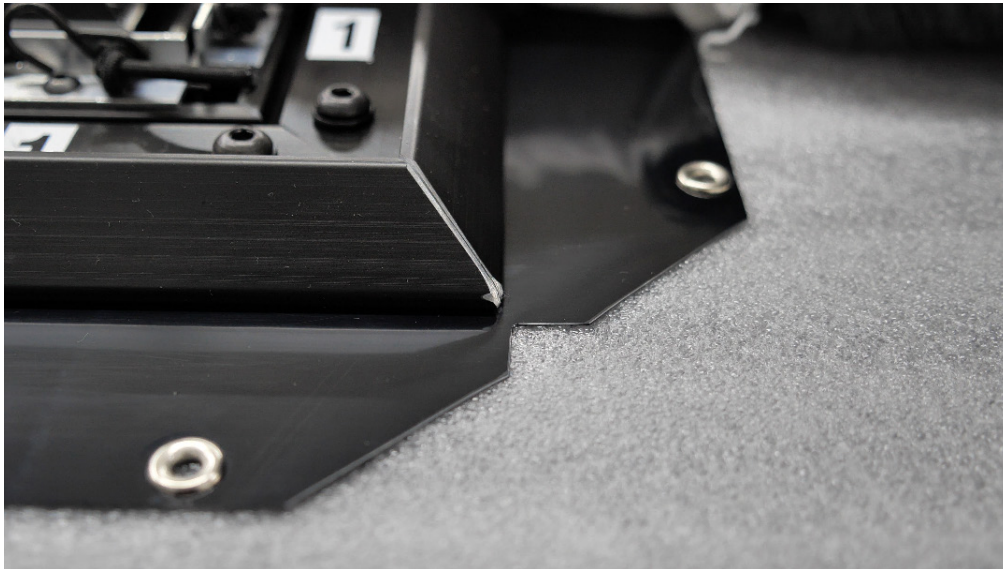


Figure 8: Align corners of screen with corners of frame

3. How to lace the screen to the frame.
 - A. For this step, Stewart recommends at least two people (preferably more) working on opposite sides of the screen to assist in maintaining proper alignment of the screen onto the frame.
 - B. Start by connecting each red S-hook with each of the red grommets, located at the center of each frame section.

IMPORTANT: For best results, connect either all four red hooks at once. Or, connect two red hooks at a time, located on opposite sides of the frame.

- C. Once all four red hooks have been connected, double check the corner alignment and adjust if necessary.
 - D. Lace the rest of the screen by working outward from the center red hooks towards each corner. Remember, hooks should be connected simultaneously on both sides of the center hook to assure that tension is applied evenly on the screen from the center of the screen and outward.

ATTACHING THE SCREEN TO THE FRAME (BLACKHAWK UST) CONT

E. Repeat this process until the first four hooks on either side of each red hook have been laced.

IMPORTANT: By this point, you should have enough uniform tension on the screen to lace the remaining hooks without causing misalignment of the screen and frame.

F. The final hooks at each corner should be connected to the screen by crossing the lacings. The final S-hook on the vertical frame connects to the final grommet on the horizontal screen edge and vice versa (see Figure 9).



Figure 9: Cross lace corner hooks

4. Attach the border trim to the screen assembly. See following page.

IMPORTANT: Remember to ALWAYS use the provided gloves while handling the screen and avoid touching the viewing side of the screen to reduce the risk of damaging the image surface.

ATTACHING THE BORDER TRIM (BALÓN EDGE ONLY)

Use the following steps to connect the border trim to the Balón Edge.

1. Unscrew the preinstalled cap screws on the frame.
2. Place front edge of the border onto the screen material.
3. Make sure the border trim is centered along the side on the screen.
4. Keeping your fingers off of the screen material, lay trim piece into place.
5. Secure the trim in place using screws previously removed during Step 1 (see Figure 10).

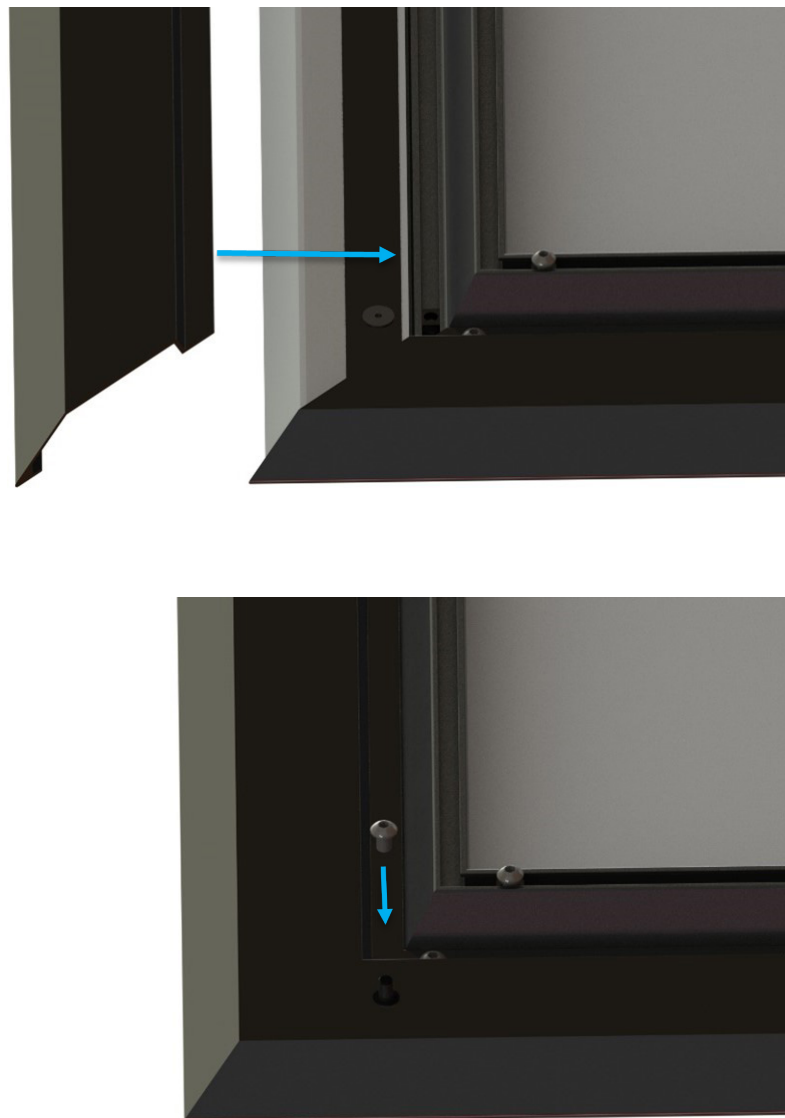


Figure 10: Border trim installed onto frame

INSTALLATION TROUBLE SHOOTING

(Vinyl) screen material doesn't fit or it seems too small (see Figure 11).

1. Make sure the screen material has been correctly installed onto the screen frame. Refer to pages 14-15.
2. If screen was installed starting with the middle snaps, the whole screen must be removed/un-snapped and reinstalled starting with the snaps on the corners of the screen.

Note: The snaps on the frame may have moved from the first installation. Make sure the corners are in place and snapped first. Then continue with the rest of the snaps starting at the center and moving outward adjusting their position on the frame as needed.

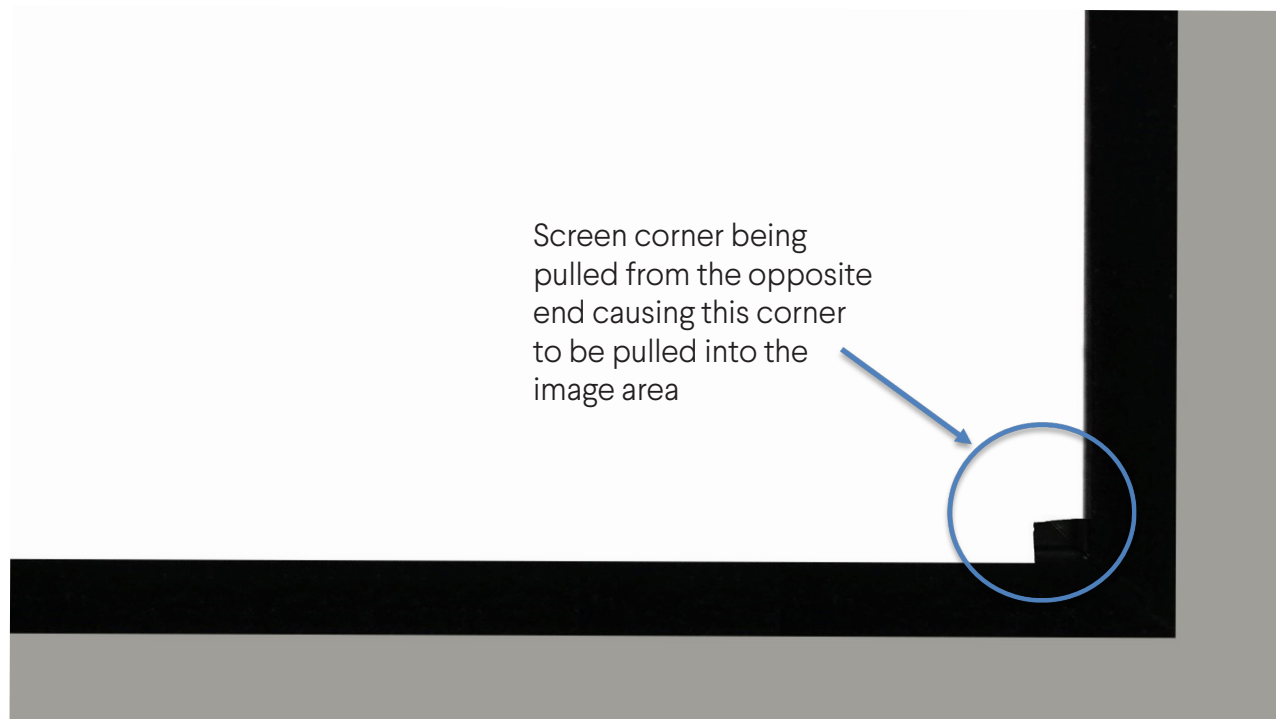


Figure 11: Example of overstretched screen material

CARING FOR AND CLEANING THE SCREEN

With reasonable care, you may expect many years of dependable use of your Stewart projection screen.

GENERAL MAINTENANCE

The surface of your screen is delicate, so we encourage you to keep your screen clean. Special attention to these instructions should be followed when cleaning.

- ▶ Avoid getting any foreign objects on the screen, as cleaning may prove very difficult. It may not be possible to remove scratches, paint, ink, etc.
- ▶ A draftsman-style brush may be used to lightly whisk away any loose dirt or dust particles. (This type of brush is usually available at office supply stores.) For tougher spots, you can make a cleaning solution using a water-based detergent and warm water. To make the solution, mix one part Simple Green, 409, or other water based industrial cleaner with three parts warm water. Moisten a clean cotton cloth or Q-Tip with this solution, moisten the stained area, and gently lift off the stain. Never use an aggressive scrubbing action as you could damage the screen surface by removing the optical coating. Remoisten the area with clean water and dab dry with a clean sponge or cotton cloth. Any residual watermarks will evaporate on their own in a few minutes.
- ▶ Contact the factory if you have questions about removing difficult spots.

CAUTION

- ▶ Do not use any other cleaning materials on the screen.
- ▶ Do not use chemicals or solvents to clean the screen. Use only commercially available, water-based de-greaser.
- ▶ Do not use chemicals, solvents, or liquid cleaners to clean the VeLux covering.
- ▶ Do not fold or crease the screen.

VELUX™ COVERING

- ▶ Use a lint roller to remove particles from the VeLux, which is the velvet material covering the frame.
- ▶ A brush may be used to comb (lift) the nap of the VeLux material to help eliminate depression marks.

REPLACEMENT PARTS & SERVICE

No user-serviceable parts are contained within the unit. Contact your dealer or the factory if you require part replacement or service.

LIMITED ONE YEAR WARRANTY

STEWART FILMSCREEN CORPORATION (Stewart) warrants all products to the original purchaser only. Stewart products are guaranteed to be free from defects in materials and workmanship for a period of one (1) year from the date of purchase by the original purchaser or eighteen (18) months from date of manufacture, as defined in the serial number. Additionally, all products must be properly operated and maintained according to Stewart instructions and cannot be damaged due to improper handling or treatment after shipment from the factory. This warranty does not apply to equipment showing evidence of misuse, abuse, or accidental damage, including neglect caused by improper installation (i.e. proximity to hot lights, exposure to extreme heat or cold, exposure to excessive humidity, etc.)

Stewart on-site warranty repair services are not available for this product. Stewart's sole obligation under this warranty shall be to repair or to replace (at Stewart's sole discretion) the defective part of the merchandise. This warranty expressly does not cover any costs of removal, installation, framing, or other costs incidental to replacing the screen or returning it to Stewart. Returns for service should be made to your Stewart dealer. If it is necessary for the dealer to return the screen or part to Stewart, transportation (freight) expenses to and from Stewart are payable by the purchaser. Stewart is not responsible for damage in shipment. To protect against damage or loss in transit, insure the product and prepay all transportation expenses.

This warranty is in lieu of all other warranties, expressed or implied, including warranties as to fitness for use or merchantability. Any implied warranties of fitness for use, or merchantability, that may be mandated by statute or rule of law are limited to the one (1) year warranty period. This warranty gives you specific legal rights, and you may also have other rights which vary from state to state. In no event will Stewart be liable for sums in excess of the purchase price of the product. No liability is assumed by Stewart for expenses or damages resulting from interruption in operation of equipment, or for incidental, direct, or consequential damages of any nature. In the event that there is a defect in materials or workmanship of a Stewart Filmscreen product, you may contact our Customer Service Department at 1161 W Sepulveda Blvd, Torrance, California 90502- 2797 (310-784-5300) Toll free (800-762-4999).

IMPORTANT: This warranty shall not be valid and Stewart shall not be bound by this warranty if the product is not operated and maintained in accordance with Stewart's written instructions. Stewart Filmscreen Corporation shall not be liable for any and all consequential damage(s) occasioned by the breach of any written or implied warranty pertaining to the sale of a Stewart Filmscreen product in excess of the purchase price of the product sold.

[illegible]

XXX



The Reference for Stunning™
www.stewartfilmscreen.com

1161 W. Sepulveda Blvd., Torrance CA 90502 USA | 800.762.4999 | Tel: 310.784.5300 | Fax: 310.539-7440 | Email: request@stewartfilmscreen.com

©2025 Stewart Filmscreen. Specifications are subject to change without notice.