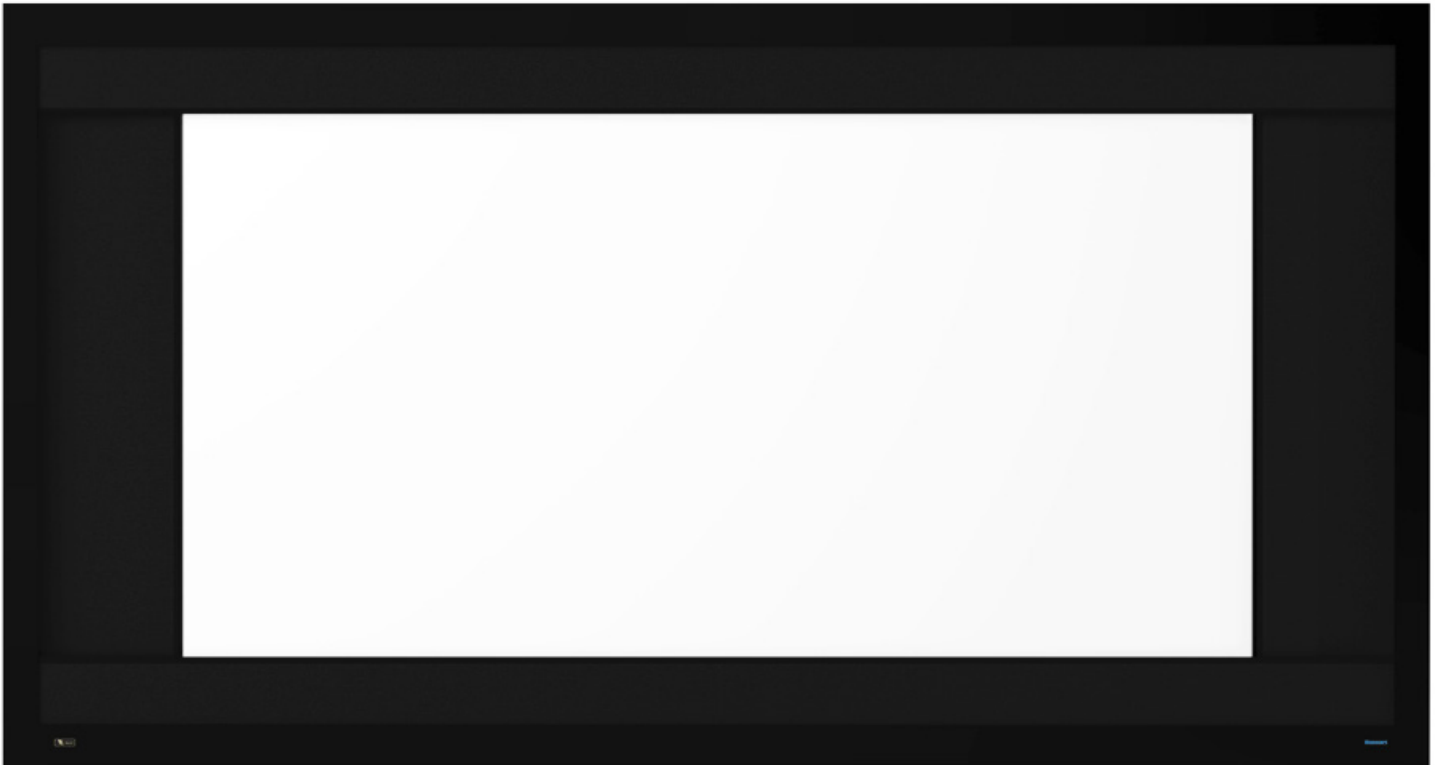


# Director's Choice 100

Four-Way, Continuously Variable Masking Screen System



**Stewart**  
F I L M S C R E E N

The Reference for Stunning™

Printed in the USA. ©2020 Stewart Filmscreen Corporation  
Stewart Filmscreen reserves the right to make changes to the product specified in this document.  
Sizes and specifications subject to change without notice at Stewart's discretion. From time to time, this  
document is updated. Current versions of this documentation are posted on the Stewart Filmscreen  
website at: [www.StewartFilmscreen.com](http://www.StewartFilmscreen.com)

# Director's Choice 100

## OWNER'S MANUAL

### Contents

To the Owner	4
About the Director's Choice 100	5
Using this Manual for Installation	6
Screen Systems Components	8
Assembly Main Exterior Frame	9
Assembly Top Horizontal Masking Cassette	11
Assembly Horizontal Frame Members	12
Screen Installation	13
Care and Cleaning the Screen	14
Troubleshooting	15
Warranty	16

## **TO THE OWNER**

---

Congratulations on purchasing the finest optical viewing screen in the world.

Your handcrafted, Director's Choice 100 projection screen has been carefully inspected to ensure you will have an optimal viewing experience that will last many years. Please take a moment to review this manual. It will guide you through the installation and the operation of your screen, and will also provide you with detailed instructions on how to care for your screen's viewing surface.

From all of us at Stewart Filmscreen, we would like to thank you for choosing the Director's Choice 100. Should you have any questions, please don't hesitate to contact our customer service department. We're here to help.

A handwritten signature in black ink, appearing to read 'MS', with a long horizontal line extending to the right from the end of the signature.

**Mary Stewart**  
**CEO & Owner**

## **ABOUT THE DIRECTOR'S CHOICE 100**

---

Stewart Filmscreen's Director's Choice 100 offers a premium viewing experience. The newly redesigned thin frame allows the screen to adjust to any aspect ratio, which means you will have the best formatted image every time. With your choice of Stewart Filmscreen's world-renowned premium screen materials, this screen is one of our most versatile and prestigious screens.

### **IMPORTANT SAFETY INFORMATION**

- ▶ Carefully read the instructions appropriate for your needs.
- ▶ This screen may require AC power connections.
- ▶ This screen should be installed by a qualified AV technician and an electrician, if required.
- ▶ For supply connections, use wires rated for at least 75 C.
- ▶ Use copper or aluminum conductors.
- ▶ For indoor use only.
- ▶ Do not connect low-voltage to line-voltage power.
- ▶ Earth ground terminal connection must be made as shown in the wiring diagrams.
- ▶ Proper short circuit and overload protection must be provided at the circuit breaker distribution panel. Use up to a 20 amp maximum circuit breaker with adequate short circuit breaking capacity for your installation.

# **USING THIS MANUAL FOR INSTALLATION**

---

## **VOIDING YOUR WARRANTY**

Failure to comply with the instructions and guidance contained in this manual will result in voiding your warranty.

## **PREPARING THE INSTALLATION**

Before proceeding with the installation of this screen, take time to thoroughly read and understand these installation instructions.

### **Before beginning the installation**

- ▶ Make sure there is a clean surface on which to unroll the screen and assemble the frame. The use of gloves is recommended. **Prepare for electrical access.**
- ▶ Check the size and weight of the screen to be installed so that you can plan for the number of people required for installation. You need at least two people to mount standard size screens; more are needed for larger, heavier screens. Specifications regarding the individual screen dimensions, weight, etc. are provided by the factory when the unit is ordered.
- ▶ If installing the Director's Choice in an aperture, ensure that the opening is large enough to accommodate the screen in its installed configuration. A minimum clearance of 1–2" (2.5–5 cm) on all sides and on top of the screen is strongly recommended.

### **You will need:**

- ▶ A level
- ▶ A drill
- ▶ A drop cloth
- ▶ Lint-free, clean cloth gloves for handling the screen
- ▶ Ladders for the personnel supporting the screen during the mounting process
- ▶ Fasteners appropriate for the surface on which the screen is being mounted
- ▶ Tools for tightening fasteners. Note: Bolts and other fasteners for the screen are standard gauge and sizes used in the U. S. regardless of installation geography. For this reason, the sizes are expressed in inches rather than metric measurements.

## USING THIS MANUAL FOR INSTALLATION (CONTINUED)

### Unpacking

Be sure to unpack carefully in a clean area. Use special care when handling the screen so that it does not become soiled or damaged. Ensure that the staples are completely removed from the end of the shipping tube. If you plan to repack your screen and hardware for transportation to another location, you may wish to photograph or make a note of how it was packed. Keep the packing material.

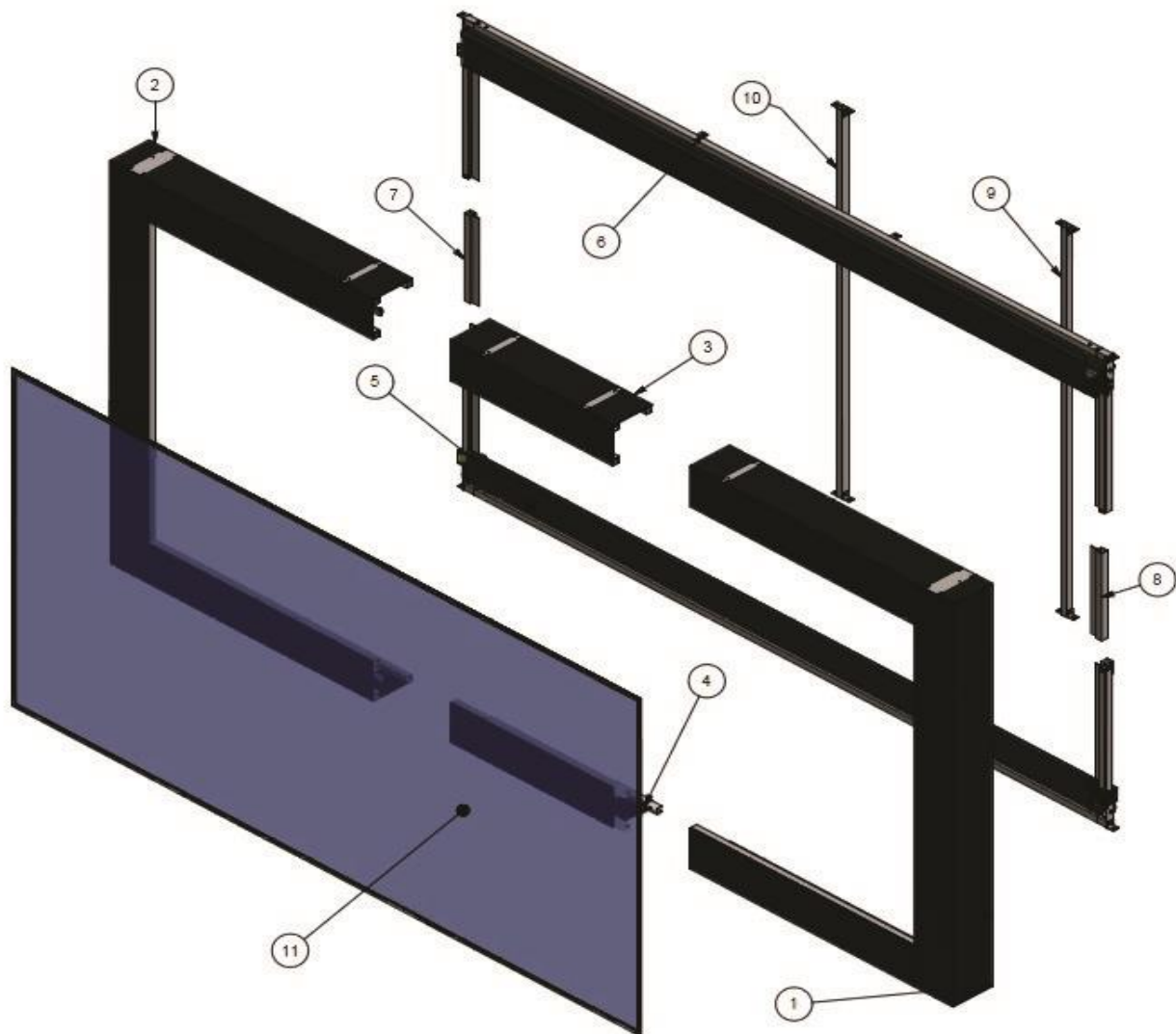
### **CAUTION**

Do not stand on the screen tube or store it vertically on its end. This will cause screen damage. If you are not going to install the screen immediately, make sure it remains horizontal during storage.

# SCREEN SYSTEM COMPONENTS

---

Please understand that the assembly and installation of the Director's Choice 100 is not as daunting as it may first appear. The factory has installed numbers on the individual sections to help installers correctly match (join) the frame. The motors and CVM control system also utilize color matching, numbered electrical cords, and connectors for assembly convenience. There are essentially 11 sub components that assemble to become the Director's Choice. Minimal tools are required for assembly: wrenches, nut driver, and a hex key. It is also advisable to have 4 to 6 technicians assist during the assembly process as some of the sections are fairly heavy and require holding into position while other technicians secure sections with bolts.



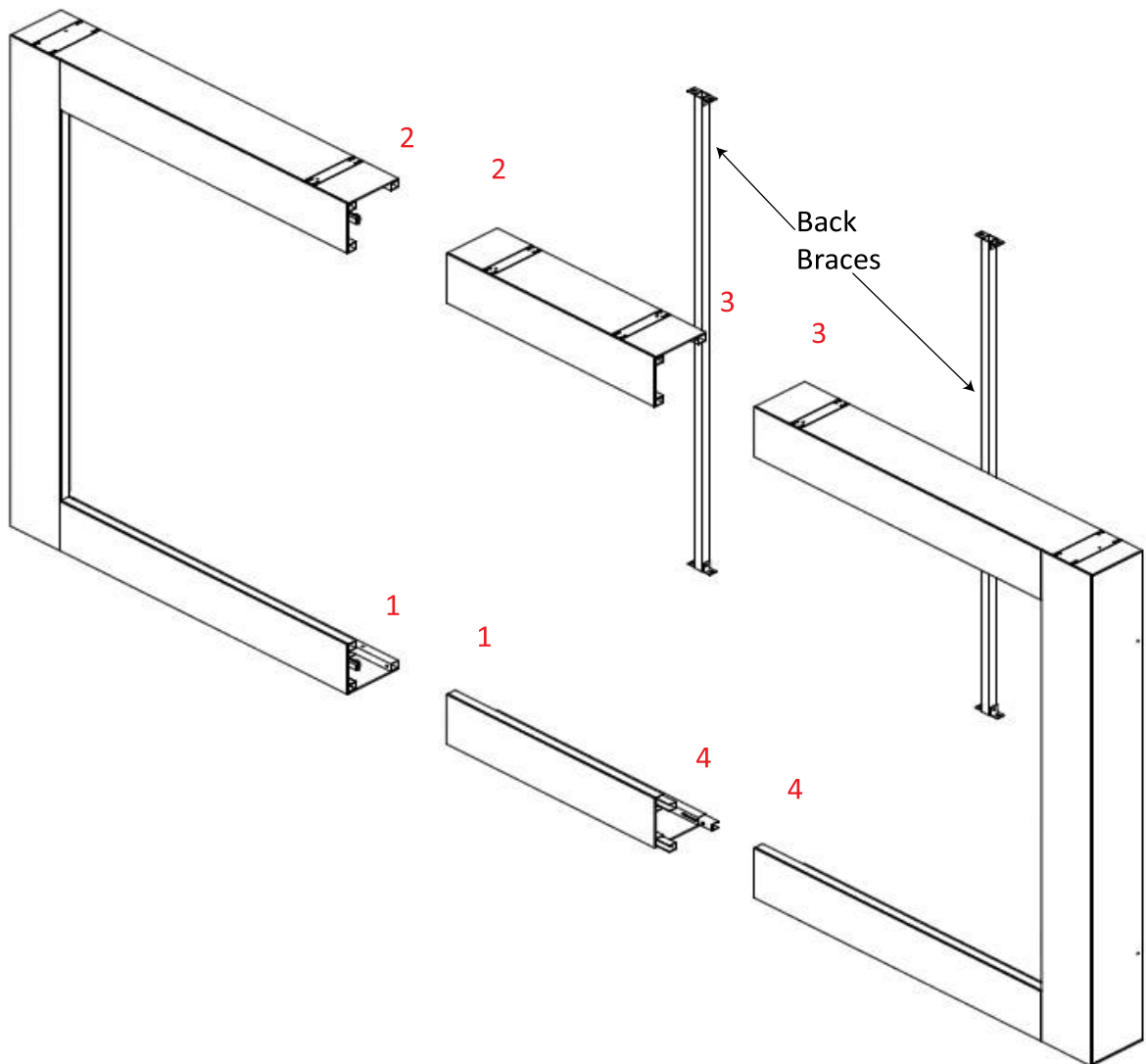


# ASSEMBLY MAIN EXTERIOR FRAME

## 1. Main Exterior Frame – 2 side panel assemblies with top and bottom mid sections

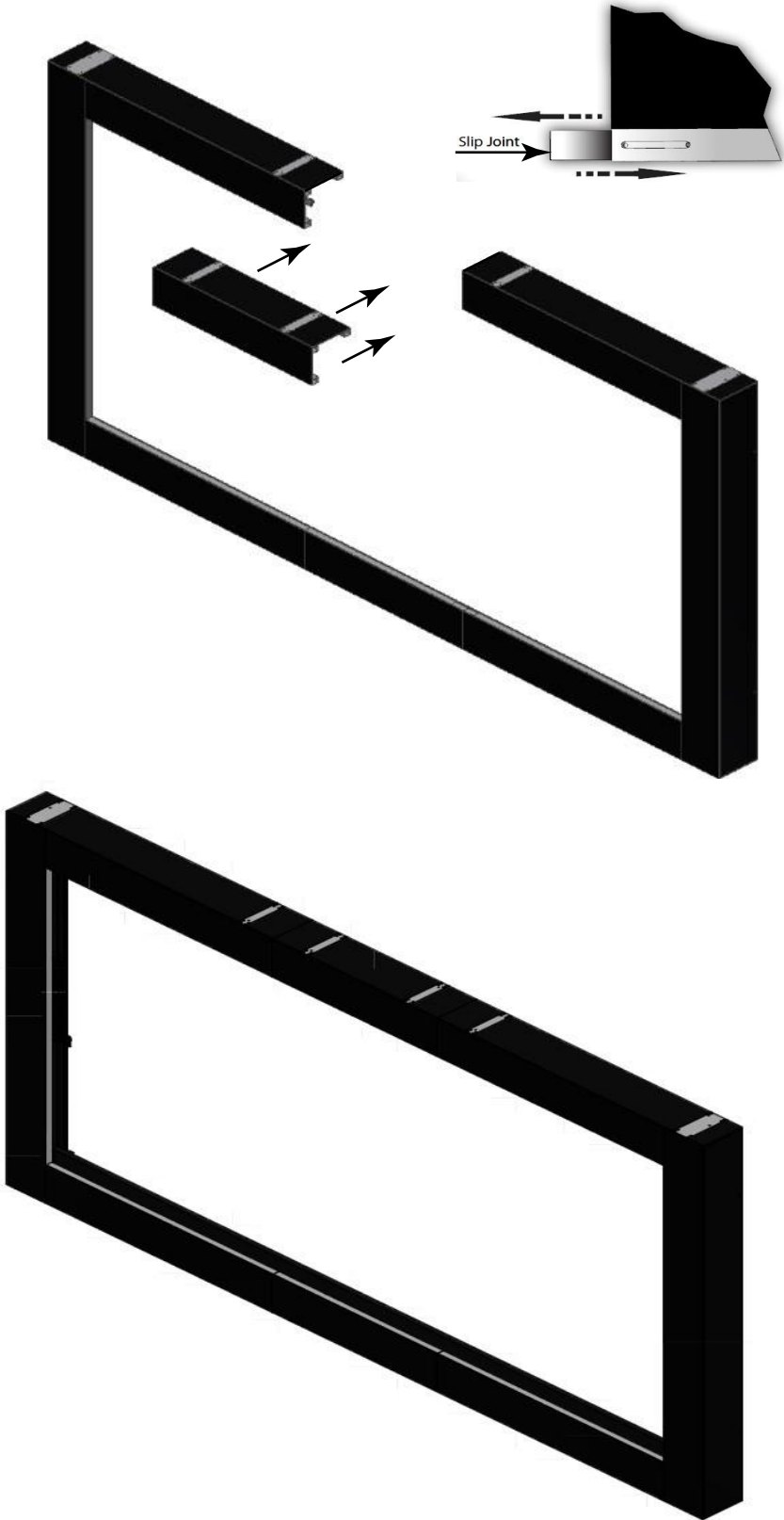
The Director's Choice main exterior frame assembly has been completely laminated with Velux providing a beautiful finished surround. The vertical side sections also contain the side panel roller system. The top and bottom middle main frame sections connect with standard ¼-20 hex head bolts. All frame section connection points are labeled 1, 2, 3, 4 etc. (see Fig 1). The internal slip joints provide ease of installation in tight locations. The main exterior frame is also vertically supported by two back braces. Do not install the Director's Choice without using these specified supports.

The Director's Choice is a free standing system that should be secured to the back wall for added support. Attachment points on the back of vertical side members have been provided for this purpose. Begin the assembly procedure as close as possible to the finished mounting location. This will minimize final lifting and movement of the Director's Choice. Make sure the Director's Choice is mounted level and plum. The use of shims may be required to achieve this goal.



# ASSEMBLY MAIN EXTERIOR FRAME (CONTINUED)

The internal slip joints provide ease of installation in tight locations.



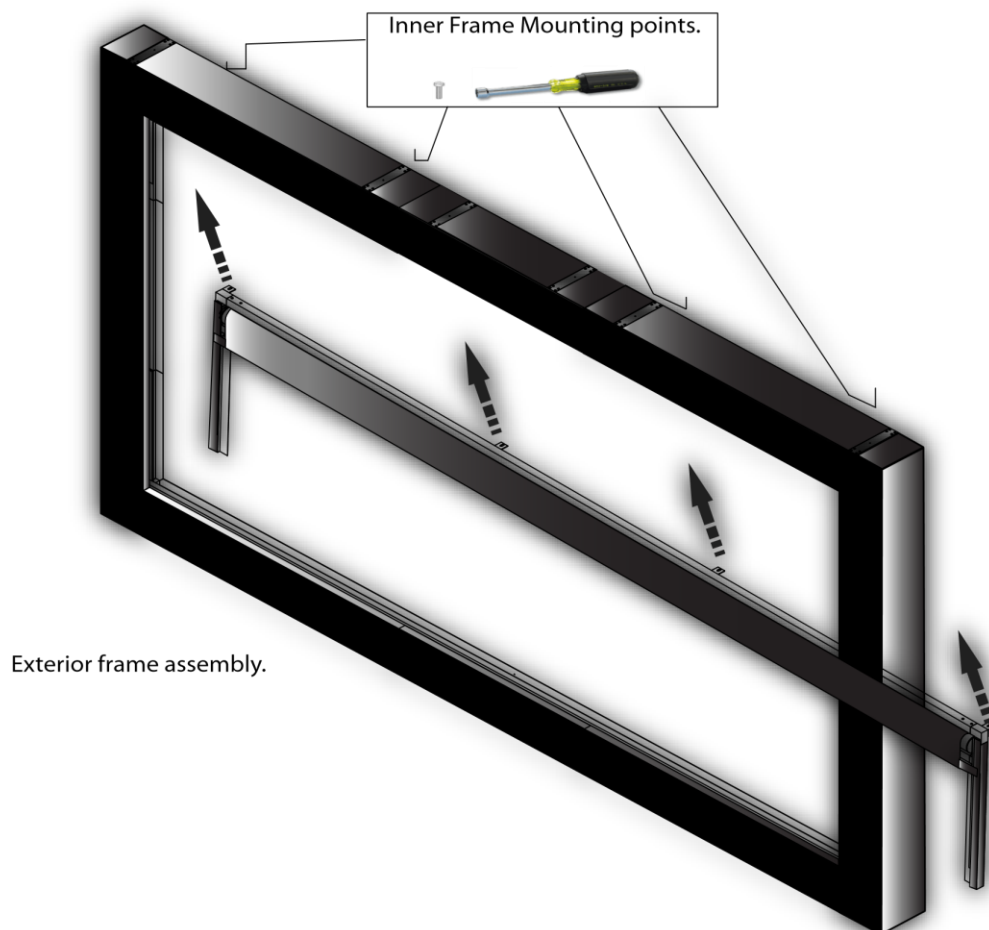
# ASSEMBLY TOP HORIZONTAL MASKING CASSETTE

## 2. Inner Frame Sections – 2 Horizontal Panel Assemblies and 2 vertical sides

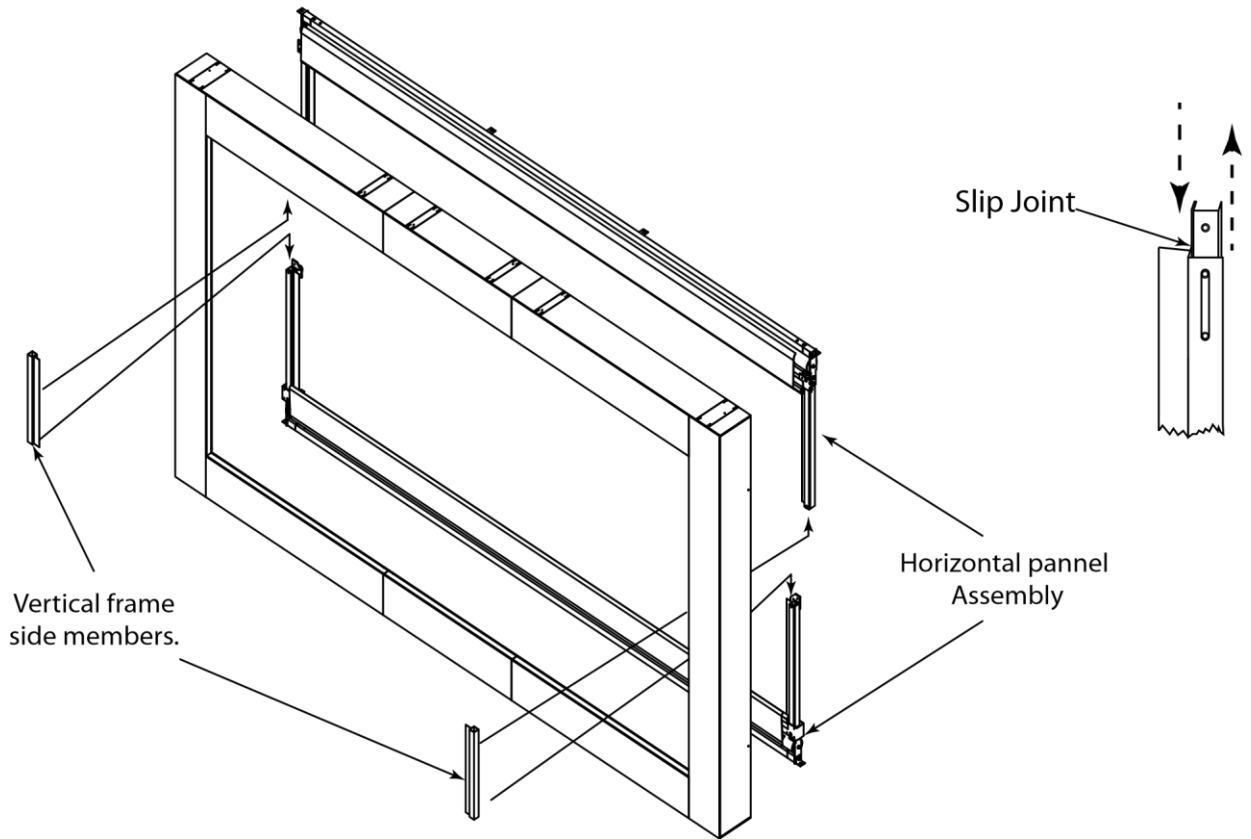
The top and bottom inner frame sections are secured to the main frame with ¼ - 20 hex head bolts. Since they contain the horizontal panel assemblies, they are heavy. This is where you need additional personnel to hold these pieces into position so that two other technicians can secure with bolts. The inner vertical side sections are then attached and secured to the top and bottom main frame sections using ¼ - 20 hex head bolts.

**Caution: Prior to assembling the horizontal panels, the two back braces must be temporarily removed.**

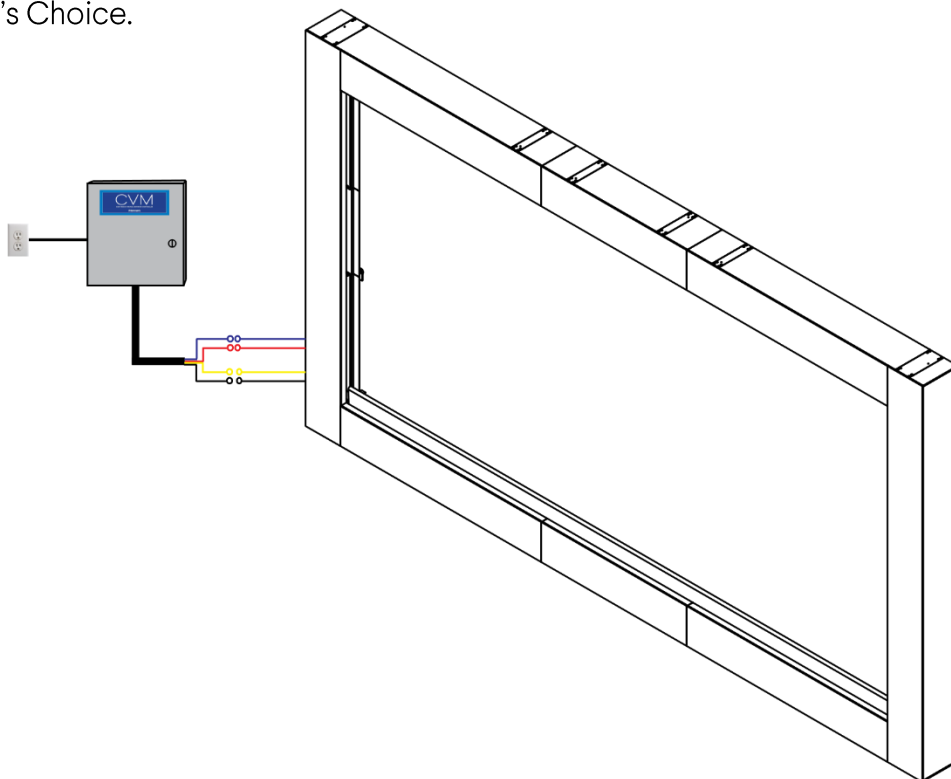
The two back braces (see Fig. 1- Pg. 2.) are there not only to support of the main exterior frame, but they also bring the main frame to square and level. Unfortunately the back braces must be removed in order to install the horizontal panels with ease. Once the horizontal panels are installed and secured, the back braces will be reinstalled to their position and secured.



# ASSEMBLY HORIZONTAL FRAME MEMBERS



We suggest that the CVM control box be mounted adjacent to the Director's Choice or in close vicinity. In this way it will be easily accessible, if required. In some more challenging installations where space is limited, the CVM control box can be mounted to the wall directly behind the Director's Choice.



# SCREEN INSTALLATION

---

## 3. Screen installation

Depending on the Director's Choice 100 size, the Stewart projection screen is either mounted to the inner frame with snaps or "S" hooks & grommets. **Do not rush screen installation to avoid screen damage. Do not use any hand tools to grasp the screen's perimeter edges while installing the screen.** The screen must evenly stretch/expand into the framework, so exercising patience during this process is vital. Only install the screen after the frame system has been secured to its final mounting location and the CVM / masking panels have been thoroughly tested. The Director's Choice 100 is now ready for activation.

**This section provides instructions for attaching the screen to the frame.**

### Caution

- ▶ Be sure that your hands and clothing are clean. Use of gloves is recommended. Be careful not to touch or scratch the image surface with fingernails.
- ▶ Do not use any tools to fasten the screen to the frame.
- ▶ Do not fold or crease the screen.

You will need at least two people: one to support the screen, and one to snap the screen in place. The viewing side of the projection screen is rolled to the inside to protect the optical coating. The screen is rolled lengthwise, with protective paper rolled in with the screen. The screen fabric attaches to the frame with S-hooks fasteners. To attach the screen to the frame:

1. Remove the screen from the cardboard shipping tube.
2. Look at the frame and locate the S-hooks.
3. While supporting the screen roll, connect the S-hooks to the screen into the frame starting from the top left corner to the center, which is indicated by a red S-hook and a red grommet attachment on the screen, and then from the center to the top right corner. Gently allow the screen to stretch onto the S-hooks. Refer to the following figures for screen attachment.



## CARE FOR AND CLEANING THE SCREEN

---

With reasonable care, you may expect many years of dependable use of your Stewart projection screen.

### General Maintenance

The surface of our screen is delicate. Special attention to these instructions should be followed when cleaning.

- ▶ A draftsman-style brush may be used to lightly whisk away any loose dirt or dust particles. This type of brush is usually available at office supply stores.
- ▶ For tougher spots, you can make a cleaning solution using a water-based detergent and warm water. To make the solution, mix one part Simple Green, 409, or other water-based industrial cleaner with three parts warm water. Moisten a clean cotton cloth or Q-Tip with this solution, moisten the stained area, and gently lift off the stain. **Never use an aggressive scrubbing action as you could damage the screen surface and its optical quality.** Remoisten the area with clean water and dab dry with a clean sponge or cotton cloth. Any residual watermarks will evaporate on their own within minutes; do not manually dry the screen surface.
- ▶ Do not use any other cleaning material on the screen.
- ▶ Contact the factory if you have any questions about removing difficult spots.

### Velux Covering

Do not use chemicals or liquid to clean the fabric. Use a lint roller to remove particles from the Velux material. A brush can be used to comb (lift) the nap off the VeLux material to help eliminate depression marks.

### Replacement Parts and Service

No user-serviceable parts are contained within the unit. Contact your dealer or the factory if you require serviceable parts.



Stewart Filmscreen Cleaning Kit

## TROUBLESHOOTING

---

With reasonable care, you may expect many years of trouble free use of your Stewart projection screen. Refer to following guidelines if you encounter a difficulty in the operation of your Stewart screen. Problems related to electrical or motor function may require a qualified serviceperson or electrician. Should you have a problem that is not addressed here, call the Stewart Filmscreen Corporation at 1 (800) 762-4999 ext. 145 for Technical Assistance.

Problem Description	Probable Cause	Action to Take
Dirt, finger prints, marks, etc. on screen surface or masking panels.	Improper handling of screen.	Brush off or use a mild detergent solution with clean rag or cotton swab (screen only).
Motor chatters when power is activated.	Can be caused by voltage drop, bad connections, or a defective switch.	Have an electrician or qualified serviceperson check all hookups including all outboard wiring.
When retracting the masks, grinding noise occurs.	Drop in voltage.	Motor requires full voltage. Have an electrician or qualified service person check available voltage.
Fabric tear.		Repair tear immediately to prevent future tearing. Use cellophane or mylar tape on the back of the screen. For large tears that interfere with the projected image, contact the Stewart factory.
CVM or setting up of controls.		Refer to CVM notes.



## **ONE (1) YEAR LIMITED WARRANTY**

STEWART FILMSCREEN CORPORATION (Stewart) warrants all products to the original purchaser only. Stewart products are guaranteed to be free from defects in materials and workmanship for a period of one (1) year from the date of purchase by the original purchaser or eighteen (18) months from date of manufacture, as defined in the serial number. Additionally, all products must be properly operated and maintained according to Stewart instructions and cannot be damaged due to improper handling or treatment after shipment from the factory. This warranty does not apply to equipment showing evidence of misuse, abuse, or accidental damage, including neglect caused by improper installation (i.e. proximity to hot lights, exposure to extreme heat or cold, exposure to excessive humidity, etc.).

Stewart on-site warranty repair services are not available for this product. Stewart's sole obligation under this warranty shall be to repair or to replace (at Stewart's sole discretion) the defective part of the merchandise. This warranty expressly does not cover any costs of removal, installation, framing, or other costs incidental to replacing the screen or returning it to Stewart. Returns for service should be made to your Stewart dealer. If it is necessary for the dealer to return the screen or part to Stewart, transportation (freight) expenses to and from Stewart are payable by the purchaser. Stewart is not responsible for damage in shipment. To protect against damage or loss in transit, insure the product and prepay all transportation expenses.

This warranty is in lieu of all other warranties, expressed or implied, including warranties as to fitness for use or merchantability. Any implied warranties of fitness for use, or merchantability, that may be mandated by statute or rule of law are limited to the one (1) year warranty period. This warranty gives you specific legal rights, and you may also have other rights which vary from state to state. In no event will Stewart be liable for sums in excess of the purchase price of the product. No liability is assumed by Stewart for expenses or damages resulting from interruption in operation of equipment, or for incidental, direct, or consequential damages of any nature. In the event that there is a defect in materials or workmanship of a Stewart Filmscreen product, you may contact our Customer Service Department at 1161 W Sepulveda Blvd, Torrance, California 90502- 2797 (310-784-5300) Toll free (800-762-4999).

**IMPORTANT:** This warranty shall not be valid and Stewart shall not be bound by this warranty if the product is not operated and maintained in accordance with Stewart's written instructions. Stewart Filmscreen Corporation shall not be liable for any and all consequential damage(s) occasioned by the breach of any written or implied warranty pertaining to the sale of a Stewart Filmscreen product in excess of the purchase price of the product sold.





The Reference for Stunning™

Printed in the USA. ©2020 Stewart Filmscreen Corporation

Stewart Filmscreen reserves the right to make changes to the product specified in this document.

Sizes and specifications subject to change without notice at Stewart's discretion. From time to time, this document is updated. Current versions of this documentation are posted on the Stewart Filmscreen website at: [www.StewartFilmscreen.com](http://www.StewartFilmscreen.com)