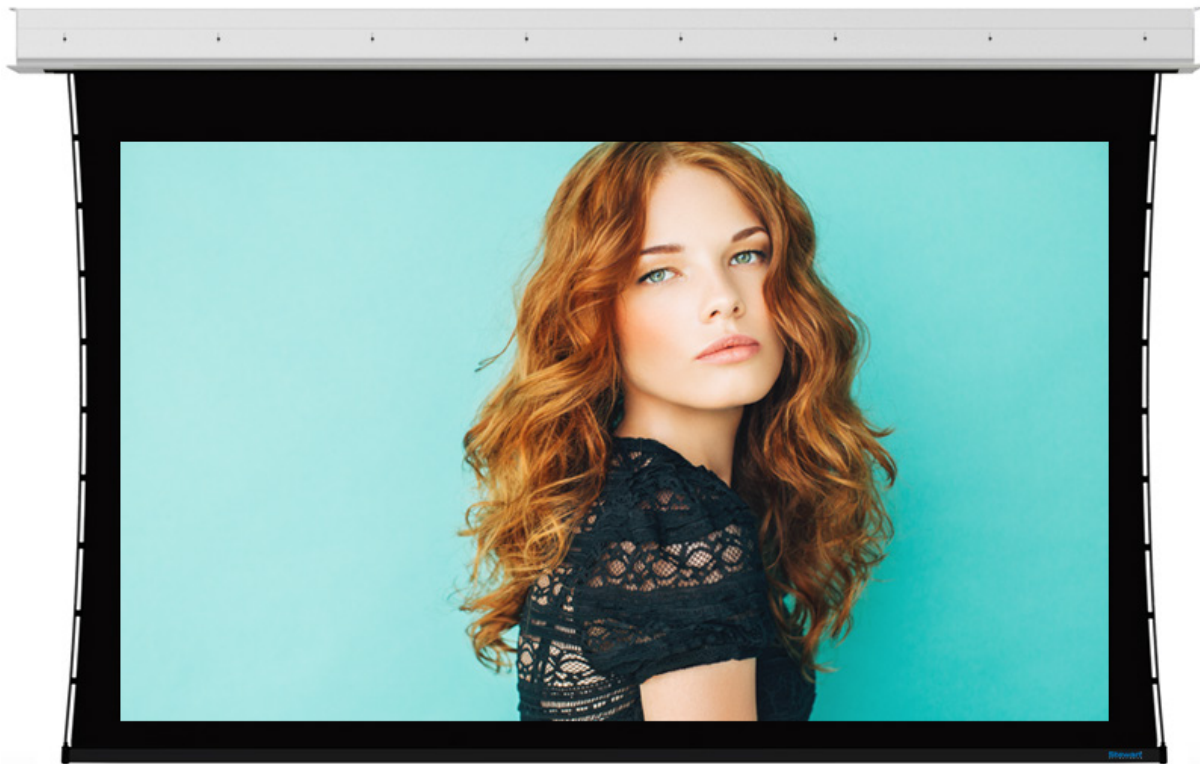


Visionary Series

Retractable, Above Ceiling, Self-Finishing Screen System with Two-Piece Construction

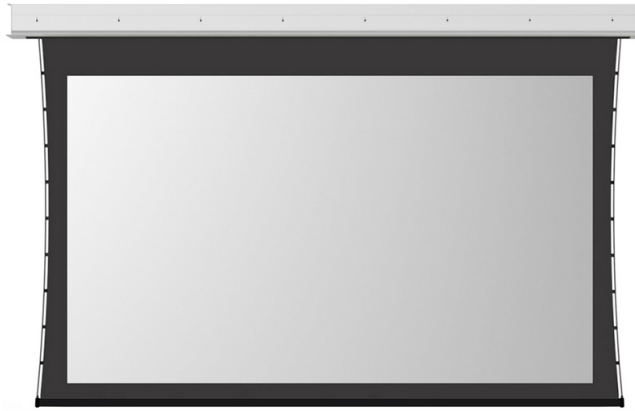


Ideal, two-piece construction for the forward-thinker



Stewart
FILMSCREEN

The Reference for Stunning™



VISIONARY SERIES SPECIFICATIONS

ATTRIBUTES	VISIONARY	VISIONARY MT3	VISIONARY MEDIO
Base MSRP (USA Only)*	\$4,467	\$7,154	\$12,689
Max. Image Height	69"	85"	110"
Max. Image Width	123"	151"	196"
Max. Image Diagonal	141"	173"	225"
Max. Deployable Height	89"	102"	127"
Max. Deployable Width	139"	171"	220"
Case Height	7"	7"	11"
Max. Case Width	152"	180"	240"
Case Depth	8"	10"	13"
Mounting Options	Above Ceiling		
Perforation Options	MicroPerf X ² THX Ultra / CinemaPerf		
Control Systems	HVS / IMC / LVC / VICS		
Motors	120V / 220-240V		

*Established by quoting the smallest size screen available without any upgrades or optional features.

Visionary is a family of self-finishing, above ceiling screen systems. This two-piece retractable screen with a self-finishing flange comes in three different size options – all the way up to 16 feet 4 inches of image width. **Visionary's** rough in housing can be split-shipped for early installation of the screen case during the pre-construction phase. When construction is complete, we can ship the screen and bezel. Now, how visionary is that? Our adjustable drywall stops accommodate any ceiling treatment, and the extruded aluminum flange has great fit and finish.



The Reference for Stunning™

www.stewartfilmscreen.com

1161 W. Sepulveda Blvd., Torrance CA 90502 USA | 800.762.4999 | Tel: 310.784.5300 | Fax: 310.326.6870 | Email: request@stewartfilmscreen.com

2021© Stewart Filmscreen. Specifications are subject to change without notice.

SCREEN MATERIAL OPTIONS

FRONT PROJECTION

- FireHawk G5**
Gain: 1.1, Max. Size: 8'6" x 120'
- GrayHawk G4**
Gain: 0.9, Max. Size: 8'6" x 120'
- GrayMatte 70**
Gain: 0.7, Max. Size: 40' x 90'
- Phantom HALR**
Gain: 1.0, Max. Size: 40' x 90'
- SnoMatte 100**
Gain: 1.0, Max. Size: 40' x 90'
- StudioTek 100**
Gain: 1.0, Max. Size: 40' x 90'
- StudioTek 130 G4**
Gain: 1.3, Max. Size: 8'6" x 120'
- UltraMatte 130**
Gain: 1.3, Max. Size: 40' x 90'
- UltraMatte 150**
Gain: 1.5, Max. Size: 40' x 90'

REAR PROJECTION

- AeroView 90**
Gain: 0.9, Max. Size: 40' x 90'
- AeroView 100**
Gain: 1.0, Max. Size: 40' x 90'
- FilmScreen 100**
Gain: 1.0, Max. Size: 40' x 90'
- FilmScreen 150**
Gain: 1.5, Max. Size: 40' x 90'
- LumiFlex 130**
Gain: 1.3, Max. Size: 40' x 90'