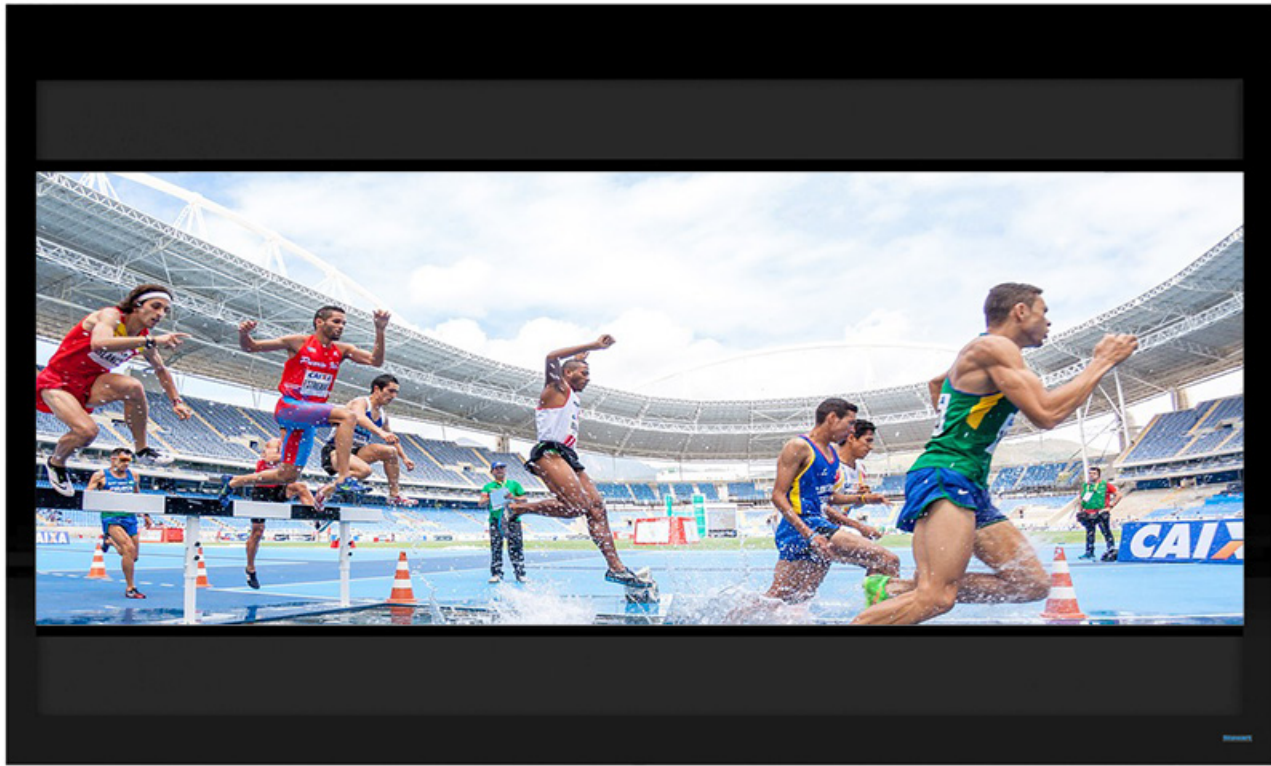


WallMask

Fixed Frame Screen System with Various Masking Options



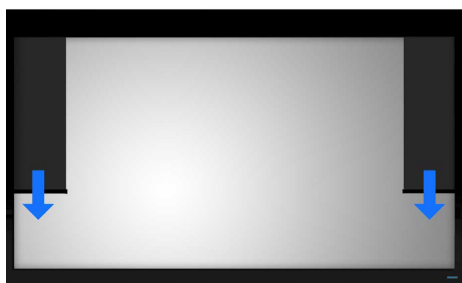
Match your viewing preferences perfectly with precision masking



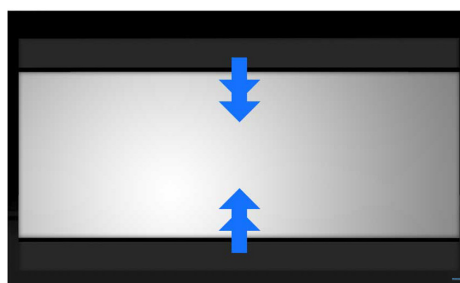
Stewart
FILMSCREEN

The Reference for Stunning™

Wallmask VM



Wallmask HM



WALLMASK SPECIFICATIONS

ATTRIBUTES	WALLMASK VM	WALLMASK 200 VM	WALLMASK HM	WALLMASK 300 HM
Base MSRP (USA Only)*	\$6,934	\$12,494	\$7,788	\$20,313
Max. Image Height	61 ¼"	93 ¼"	67 ½"	148 ¼"
Max. Image Width	144"	219"	120"	264"
Max. Image Diagonal	157"	238"	138"	303"
Max. Frame Height	72"	115 ¼"	83"	168"
Max. Frame Width	152"	235"	128"	280"
Frame Depth	5"	6"	5"	10"
Mounting Options	Wall / Aperture			Aperture / Floor
Perforation Options	MicroPerf X ² THX Ultra	MicroPerf X ² THX Ultra / CinemaPerf	MicroPerf X ² THX Ultra	MicroPerf X ² THX Ultra / CinemaPerf
Control Systems	CVM / HVS / LVC			
Max. Presets	24			
Motors	120v /220-240v			

*Established by quoting the smallest size screen available without any upgrades or optional features.

Deciding what masking to add to a two-piece projection system can seem challenging. Let us intelligently steer you through the process to guarantee your install precisely matches your viewing preferences. We start with a single position, constant height system, deployment masks – giving you a choice of two, perfectly masked aspect ratios. We also offer constant width iterations which provide continuously variable image aspect ratios from the native resolution of your projector to the widest CinemaScope formats possible. Hybrid, four-way systems, combining the two approaches, are also available and will deliver a legacy 4:3 aspect ratio that vintage film cinephiles will love.



The Reference for Stunning™

www.stewartfilmscreen.com

1161 W. Sepulveda Blvd., Torrance CA 90502 USA | 800.762.4999 | Tel: 310.784.5300 | Fax: 310.326.6870 | Email: request@stewartfilmscreen.com

2023© Stewart Filmscreen. Specifications are subject to change without notice.