

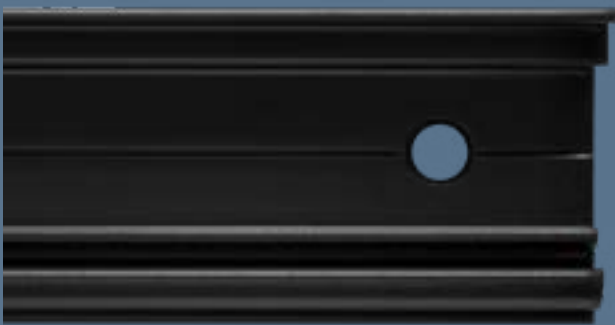
## WallScreen 2.5



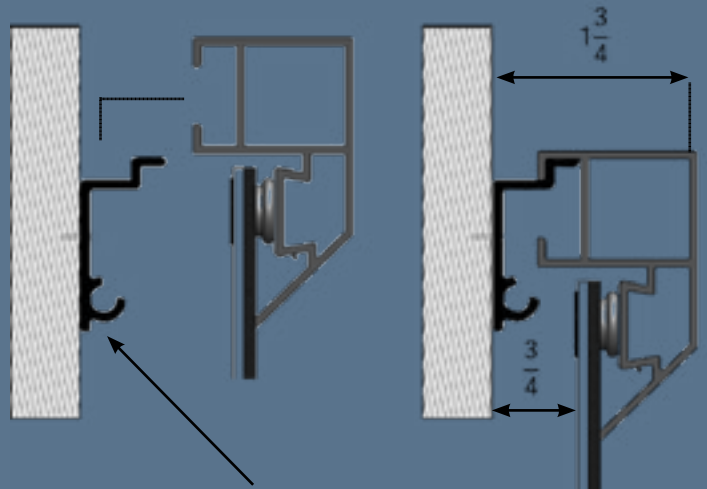
**2.5 Inch Fixed Frame, Quick Snap System with Various Material Options**  
Base MSRP \$2,106.76 (USA Only)

### WallScreen 2.5 Hanging Bar Mount System

Hanging Bar

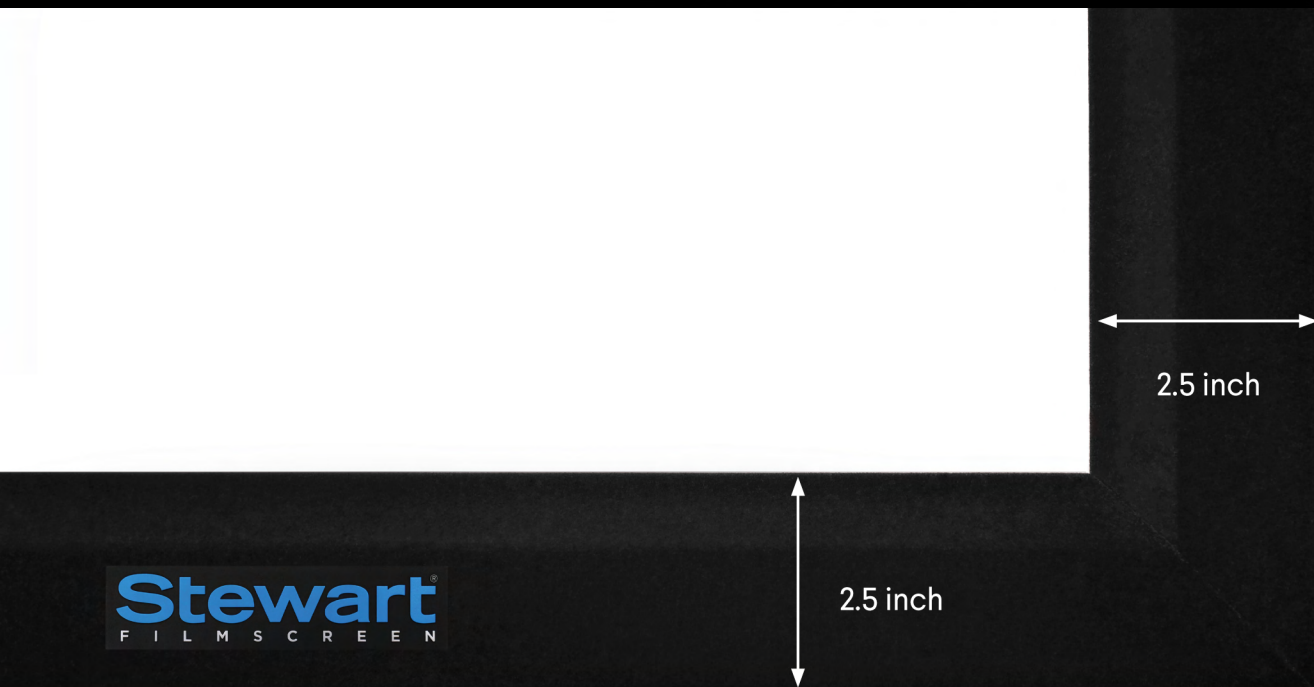


Side View of Frame



Hanging Bar Attaches to the Wall

# WallScreen 2.5

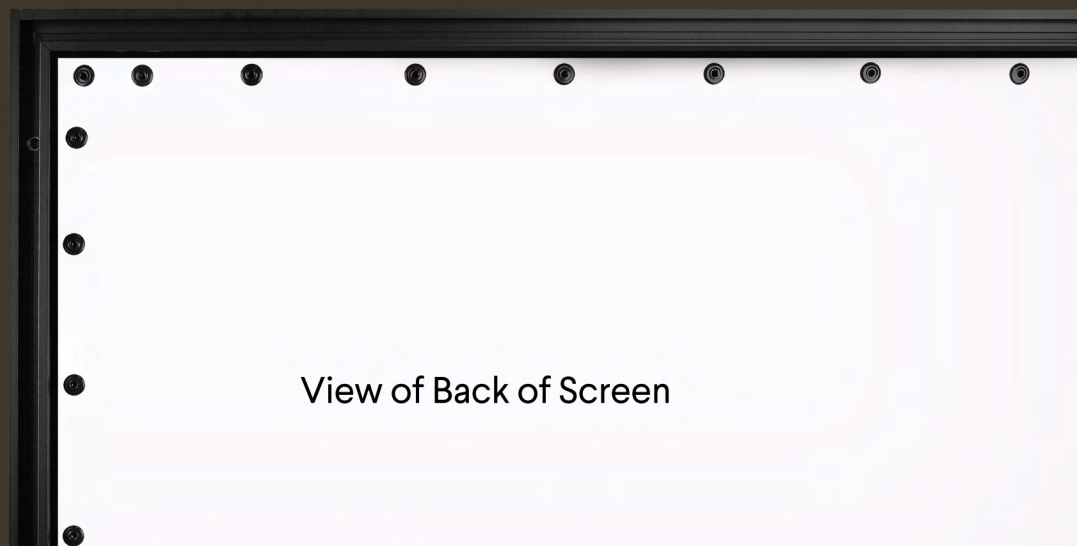


## Smaller Border Bigger Picture

- Available in any aspect ratio
- 2.5" frame
- 164" maximum image width
- 92" maximum image height
- 188" maximum diagonal
- Velvet Velux overlay

## Snap Screen Assembly

Quick Snap Screen Assembly Perfectly Aligns Screen Fabric to the Frame for Easy Installation





# Screen Materials

## ALR - Multipurpose Room



GrayHawk G4  
Gain: 0.9



GrayMatte 70  
Gain: 0.7



FireHawk G5  
Gain: 1.1



Phantom HALR  
Gain: 1.0



Silver 3D  
Gain 3.0



Silver 5D  
Gain 2.3

## Light Controlled - Dedicated Room



StudioTek 100  
Gain: 1.0



StudioTek 130 G4  
Gain: 1.3



SnoMatte 100  
Gain 1.0



UltraMatte 130  
Gain 1.3



UltraMatte 150  
Gain 1.5



Harmony G2  
Gain 0.7

## Rear Projection



AeroView 70  
Gain: 0.7



AeroView 90  
Gain: 0.9



AeroView 100  
Gain 1.0



FilmScreen 100  
Gain 1.0

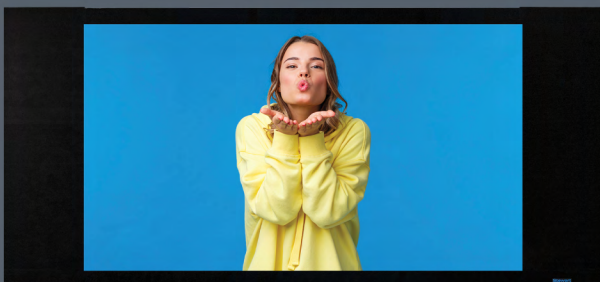


FilmScreen 150  
Gain 1.5



LumiFlex 130  
Gain 1.3

## Manual Masking Panels (Optional)



- More viewing options – easily converts Scope to 16:9 aspect ratio\*
- Manually attaches to screen frame
- Each panel is custom fit for a clean finish
- Sharp, crisp borders improves perceived contrast
- For front projection only
- Great solution for tight budgets

\* Available in any aspect ratio (2.35, 2.39 and 2.40:1)  
(Panels not available with acoustic transparency)

## MicroPerf X<sup>2</sup> THX Ultra Certified - Acoustically Transparent

- Provides a specialized diamond-shaped perforation pattern, oriented to eliminate moiré
- Delivers optimal balance of sound and visual fidelity

[Learn More](#)

